

# Product information

## Monoclonal anti-human PDCD12 antibody (clone 3G4)

Mouse IgG<sub>2a</sub>, κ

Cat. No. IBAPD0912

**Immunogen:** Recombinant human PDCD12 (254-362aa) purified from *E. coli*

**NCBI Accession No.:** NP\_006465

**Isotype:** Mouse IgG<sub>2a</sub> heavy chain and κ light chain

**Clone:** Anti-human PDCD12 mAb, clone 3G4, is derived from hybridization of mouse F0 myeloma cells with spleen cells from BALB/c mice immunized with a recombinant human PDCD12 protein.

**Description:** PDCD12 (Programmed cell death 12), also referred to as AVEN, represents a new class of cell death regulator. PDCD12 is a conserved intracellular membrane protein that blocks apoptosis impeded by Apaf-1 mediated caspase activation. Bcl-2 and BAD also interact with PDCD12 to prevent apoptosis. It is expressed in a wide variety of normal tissues including heart, skeletal muscle, kidney, liver, testis, and diseases such as cancer

**Concentration:** 1 mg/ml

**Form:** Liquid. In Phosphate-Buffered Saline (pH 7.4) with 0.02% Sodium Azide, 10% Glycerol.

**Storage:** Can be stored at +4°C. For long term storage, aliquot and store at -20°C. Avoid repeated freezing and thawing cycles.

**Usage:** The antibody has been tested by ELISA, Western blot and immunohistochemistry analysis to assure specificity and reactivity. Since application varies, however, each investigation should be titrated by the reagent to obtain optimal results. Recommended dilution range for Western blot is 1:1,000~1:2,000 and immunohistochemistry analysis is 1:50~100.

Recommended starting dilution for Western blot is 1:1,000 and Immunohistochemistry is 1:50.

**For research use only. This product is not intended or approved for human, diagnostics or veterinary use.**



Manufactured for:

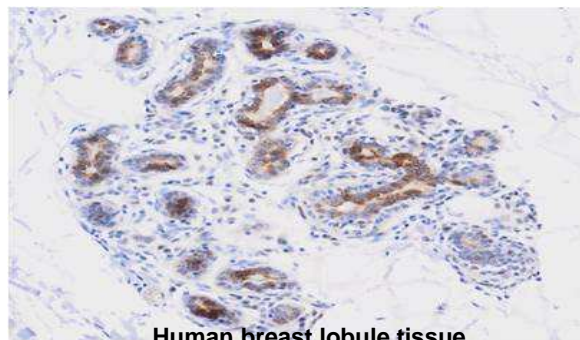
Immuno-Biological Laboratories, Inc. (IBL-America)  
8201 Central Ave. NE, Suite P, Minneapolis, Minnesota 55432, USA  
Phone: (888) 523-1246 Fax.: (763) 780-2988  
Email: [info@ibl-america.com](mailto:info@ibl-america.com) Web: [www.ibl-america.com](http://www.ibl-america.com)SS

# Product information

**Application:** ELISA, WB, IHC

## Immunohistochemistry

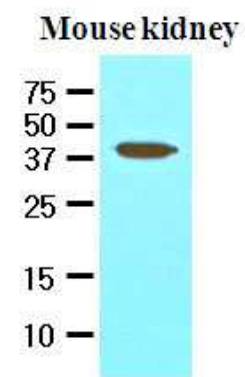
Paraffin embedded sections of human breast lobule tissue were incubated with anti-human PDCD12 (1:50) for 2 hours at room temperature. Antigen retrieval was performed in 0.1M sodium citrate buffer and detected using Diaminobenzidine (DAB)



Human breast lobule tissue

## Western blot analysis

The extracts of mouse kidney (50ug) were resolved by SDS-PAGE, transferred to NC membrane and probed with anti-human PDCD12 (1:1000). Proteins were visualized using a goat anti-mouse secondary antibody conjugated to HRP and an ECL detection system.



**General references:** Figueroa B Jr, *et al.* (2004) *Biotechnol Bioeng.* **85(6)**, 589-600

Cheng EH, *et al.* (2000) *Mol Cell.* **6(1)**, 31-40

**For research use only. This product is not intended or approved for human, diagnostics or veterinary use.**