

Monoclonal anti-MBP antibody (clone 10C12)

Mouse IgG₁, κ

Cat. No. IBAMB0710

Immunogen: Recombinant MBP purified from *E. coli*

NCBI Accession No.: NP-418458.1

Isotype: Mouse IgG₁ heavy chain and κ light chain

Clone: Anti-MBP mAb, clone 10C12, is derived from hybridization of mouse SP2/0 myeloma cells with spleen cells from BALB/c mice immunized with a recombinant MBP protein.

Description: Epitope tagging offers an easy and universal strategy for the identification and purification of proteins derived by recombinant DNA technology. The insertion of a Maltose Binding Protein (MBP) tag creates a stable fusion product that does not interfere with the bioactivity of the protein or with the biodistribution of the MBP tagged product.

Concentration: 1mg/ml

Form: Liquid. In Phosphate-Buffered Saline (pH 7.4) with 0.02% Sodium Azide, 10% Glycerol.

Storage: Can be stored at +4°C. For long term storage, aliquot and store at -20°C. Avoid repeated freezing and thawing cycles.

Usage: The antibody has been tested by ELISA and Western blot analysis to assure specificity and reactivity. Since application varies, however, each investigation should be titrated by the reagent to obtain optimal results. Recommended dilution range for Western blot analysis is 1:1,000 ~ 2,000. Recommended starting dilution is 1:1,000.

Application: ELISA, WB

For research use only. This product is not intended or approved for human, diagnostics or veterinary use.



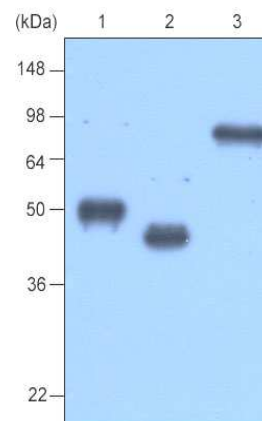
Manufactured for:

Immuno-Biological Laboratories, Inc. (IBL-America)
8201 Central Ave. NE, Suite P, Minneapolis, Minnesota 55432, USA
Phone: (888) 523-1246 Fax.: (763) 780-2988
Email: info@ibl-america.com Web: www.ibl-america.com

Product information

Western blot analysis

Recombinant protein MBP-tagged BCDEF, TPD52 and MAGEA3(each 20ng) were resolved by SDS-PAGE, transferred to PVDF membrane and probed with anti-MBP (1:1,000). Proteins were visualized using a goat anti-mouse secondary antibody conjugated to HRP and an ECL detection system.



Lane 1 : MBP-tagged BCDEF protein

Lane 2 : MBP-tagged TPD52 protein

Lane 3 : MBP-tagged MAGEA3 protein

General references: Jonathan D *et al.*,(1996) *Proc Natl Acad Sci USA* 93:211–215

Weiming Y *et al.*, (2001) *EMBO J* 20(3):362–371

Chen Z *et al.*, (2005) *Proc Natl Acad Sci USA* 102(29):10200–10205

For research use only. This product is not intended or approved for human, diagnostics or veterinary use.



Manufactured for:

Immuno-Biological Laboratories, Inc. (IBL-America)
8201 Central Ave. NE, Suite P, Minneapolis, Minnesota 55432, USA

Phone: (888) 523-1246 Fax.: (763) 780-2988

Email: info@ibl-america.com Web: www.ibl-america.com