

Monoclonal anti-human KIR2DL3 antibody (clone 190IIC311)

Mouse IgG_{2a}, κ

Cat. No. IBAKR3006

Immunogen: Recombinant human KIR2DL3 (19-161aa) purified from *E. coli*

NCBI Accession No.: NP_05326

Isotype: Mouse IgG_{2a} heavy chain and κ light chain

Clone: Anti-human KIR2DL3 mAb, clone 190IIC311, is derived from hybridization of mouse P3-x63-Ag8.653 myeloma cells with spleen cells from BALB/c mice immunized with recombinant KIR2DL3.

Description: Reacts with extracellular domain of the KIR2DL3, a member of the killer cell immunoglobulin-like receptor(KIR) family. The KIR family consists of transmembrane glycoproteins of the Ig superfamily expressed on human NK cells and a subset of human T cells which they are involved in recognition of either MHC class I molecules or unknown ligand on target cells and inhibit cytotoxic activities.²

Concentration: 1 mg/ml

Form: Liquid. In Phosphate-Buffered Saline (pH 7.4) with 0.02% Sodium Azide, 10% Glycerol

Storage: Can be stored at +4C. For long term storage, aliquot and store at -20C. Avoid repeated freezing and thawing cycles.

Usage: The antibody has been tested by ELISA, Western blot analysis, Flow cytometry and ICC/IF to assure specificity and reactivity. Since application varies, however, each investigation should be titrated by the reagent to obtain optimal results.

Application: ELISA, WB, Flow cytometry, ICC/IF

For research use only. This product is not intended or approved for human, diagnostics or veterinary use.



Manufactured for:
Immuno-Biological Laboratories, Inc. (IBL-America)
8201 Central Ave. NE, Suite P, Minneapolis, Minnesota 55432, USA
Phone: (888) 523-1246 Fax.: (763) 780-2988
Email: info@ibl-america.com Web: www.ibl-america.com

Product information



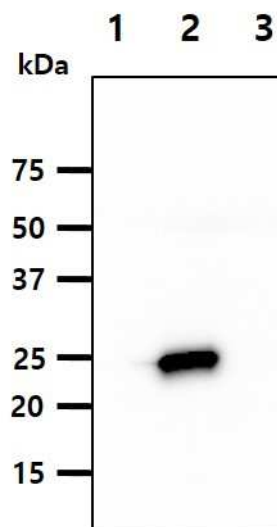
Western blot analysis

The Recombinant Proteins (50ng) were resolved by SDS-PAGE, transferred to PVDF membrane and probed with anti-human KIR2DL3 antibody (1:1000). Proteins were visualized using a goat anti-mouse secondary antibody conjugated to HRP and an ECL detection system.

Lane 1.: KIR2DL1 recombinant protein

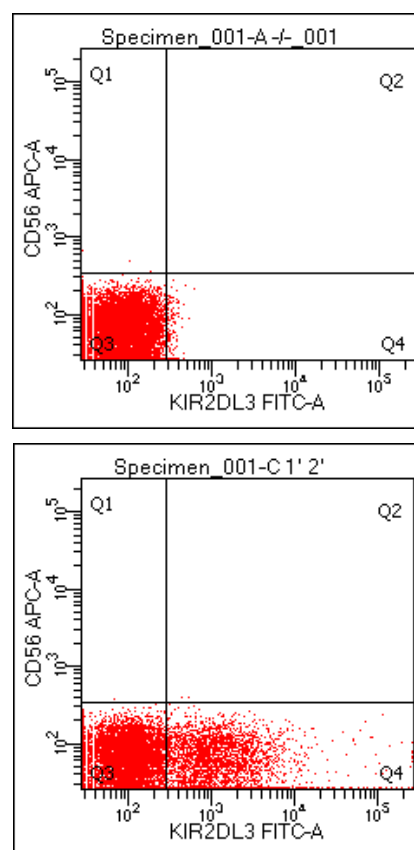
Lane 2.: KIR2DL3 recombinant protein

Lane 3.: KIR2DS4 recombinant protein



Flow cytometry

Flow cytometry analysis of KIR2DL3 in Human PBMC. The secondary antibody used goat anti-mouse IgG Alexa fluor 488 conjugate.



For research use only. This product is not intended or approved for human, diagnostics or veterinary use.

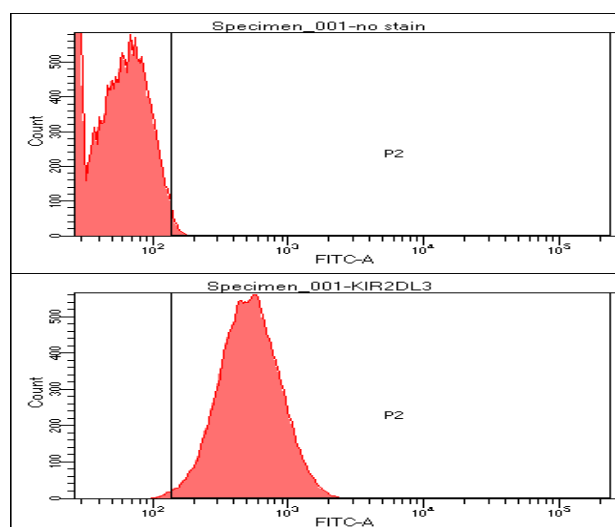


Manufactured for:
Immuno-Biological Laboratories, Inc. (IBL-America)
8201 Central Ave. NE, Suite P, Minneapolis, Minnesota 55432, USA
Phone: (888) 523-1246 Fax: (763) 780-2988
Email: info@ibl-america.com Web: www.ibl-america.com

Product information

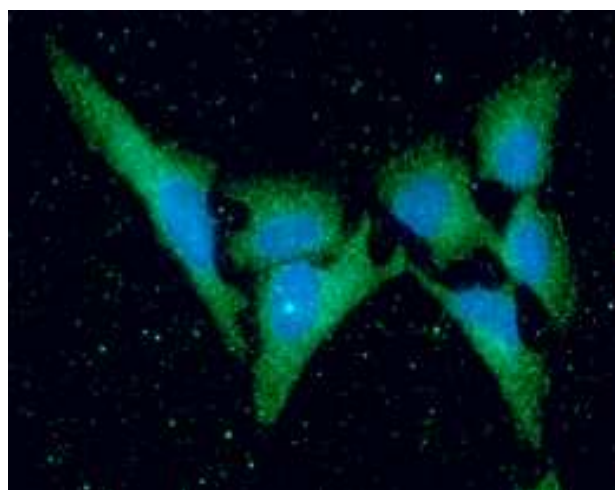
Flow cytometry

Flow cytometry analysis of KIR2DL3 in HeLa cell line, staining at 2-5ug for 1×10^6 cells. The secondary antibody used goat anti-mouse IgG Alexa fluor 488 conjugate.



ICC/IF analysis

ICC/IF analysis of KIR2DL3 in HeLa cells line, stained with DAPI (Blue) for nucleus staining and monoclonal anti-human KIR2DL3 antibody (1:100) with goat anti-mouse IgG-Alexa fluor 488 conjugate (Green).



General references: Shin JS., et al. (1999) *Hybridoma*. **18**: 521-527.

Chwae YJ., et al. (2002) *J Immunology*. **169**: 3726-3735.

For research use only. This product is not intended or approved for human, diagnostics or veterinary use.