

## Monoclonal anti-human KIR2DL1 antibody (clone 2F9)

Mouse IgG<sub>2a</sub>, κ

Cat. No. IBAKR0620

**Immunogen:** Recombinant human KIR2DL1 (23-223aa) purified from *E. coli*

**NCBI Accession No.:** NP\_055033

**Isotype:** Mouse IgG<sub>2a</sub> heavy chain and κ light chain

**Clone:** Anti-human KIR2DL1 mAb, clone 2F9, is derived from hybridization of mouse SP2/O myeloma cells with spleen cells from BALB/c mice immunized with a recombinant human KIR2DL1 protein.

**Description:** The KIR family consists of transmembrane glycoproteins of the Ig superfamily expressed on human NK cells and a subset of human T cells which they are involved in recognition of either MHC class I molecules or unknown ligand on target cells and inhibit cytotoxic activities.

**Concentration:** 1 mg/ml

**Form:** Liquid. In Phosphate-Buffered Saline (pH 7.4) with 0.02% Sodium Azide, 10% Glycerol

**Storage:** Can be stored at +4C. For long term storage, aliquot and store at -20C. Avoid repeated freezing and thawing cycles.

**Usage:** The antibody has been tested by ELISA, Western blot analysis, ICC/IF and Flow cytometry to assure specificity and reactivity. Since application varies, however, each investigation should be titrated by the reagent to obtain optimal results.

**Application:** ELISA, WB, Flow cytometry, ICC/IF

**For research use only. This product is not intended or approved for human, diagnostics or veterinary use.**

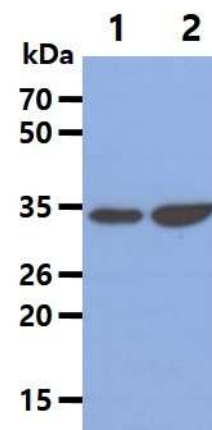
# Product information

## Western blot analysis

The Cell lysates (40ug) were resolved by SDS-PAGE, transferred to PVDF membrane and probed with anti-human KIR2DL1 antibody (1:1000). Proteins were visualized using a goat anti-mouse secondary antibody conjugated to HRP and an ECL detection system.

Lane 1.: HepG2 cell lysate

Lane 2.: Jurkat cell lysate



## Western blot analysis

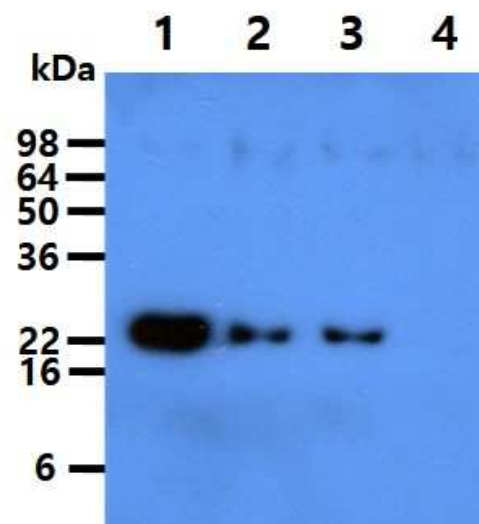
Recombinant human protein KIR2DL1, KIR2DL3, KIR2DS4 and KIR2DL4 (each 50ng per well) were resolved by SDS-PAGE, transferred to PVDF membrane and probed with anti-human KIR2DL1 (1:500). Proteins were visualized using a goat anti-mouse secondary antibody conjugated to HRP and an ECL detection system.

Lane 1.: KIR2DL1 recombinant protein

Lane 2.: KIR2DL3 recombinant protein

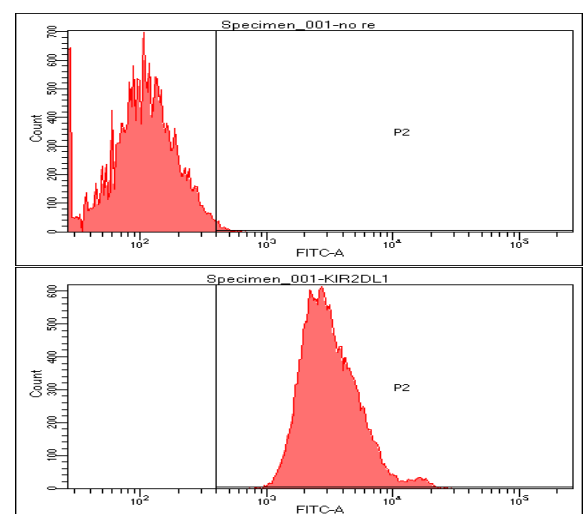
Lane 3.: KIR2DS4 recombinant protein

Lane 4.: KIR2DL4 recombinant protein



## Flow cytometry

Flow cytometry analysis of KIR2DL1 in Hep3B cell line, staining at 2-5ug for  $1 \times 10^6$  cells. The secondary antibody used goat anti-mouse IgG Alexa fluor 488 conjugate.



For research use only. This product is not intended or approved for human, diagnostics or veterinary use.

# Product information

## ICC/IF analysis

ICC/IF analysis of KIR2DL1 in Hep3B cells line, stained with DAPI (Blue) for nucleus staining and monoclonal anti-human KIR2DL1 antibody (1:100) with goat anti-mouse IgG-Alexa fluor 488 conjugate (Green).



## Cross activity

Protein	KIR2DL1	KIR2DL3	KIR2DS4	KIR2DL4
Affinity	+++	+	+	-

**General references:** Shin JS., *et al.* (1999) *Hybridoma*. **18**: 521-527.  
 Qing RF., *et al.* (2001) *Nature Immunology*. **2**: 452-460.

**For research use only. This product is not intended or approved for human, diagnostics or veterinary use.**