

## Monoclonal anti-human FABP1 antibody (clone AT2G4)

Mouse IgG<sub>1</sub>, κ

Cat. No. IBAFA0908

**Immunogen:** Recombinant human FABP1 (1-127aa) purified from *E. coli*

**NCBI Accession No.:** NP\_001434

**Isotype:** Mouse IgG<sub>1</sub> heavy chain and κ light chain

**Clone:** Anti-human FABP1 mAb, clone 2G4, is derived from hybridization of mouse F0 myeloma cells with spleen cells from BALB/c mice immunized with a recombinant human FABP1 protein.

**Description:** FABP1 (Fatty acid binding protein1) encodes the fatty acid binding protein found in liver. FABP1 is composed of ten antiparallel β strands that form a barrel with a bigger binding pocket than the other FABPs allowing it to accommodate two fatty acid. This protein binds free fatty acids and their coenzyme A derivatives, bilirubin, and some other small molecules in the cytoplasm; it may be involved in intracellular lipid transport and metabolism.

**Concentration:** 1 mg/ml

**Form:** Liquid. In Phosphate-Buffered Saline (pH 7.4) with 0.02% Sodium Azide, 10% Glycerol

**Storage:** Can be stored at +4C. For long term storage, aliquot and store at -20C. Avoid repeated freezing and thawing cycles.

**Usage:** The antibody has been tested by ELISA, Western blot, immunohistochemistry analysis, Flow cytometry and ICC/IF to assure specificity and reactivity. Since application varies, however, each investigation should be titrated by the reagent to obtain optimal results.

**Application:** ELISA, WB, IHC, Flow cytometry, ICC/IF

**For research use only. This product is not intended or approved for human, diagnostics or veterinary use.**



Manufactured for:

Immuno-Biological Laboratories, Inc. (IBL-America)  
8201 Central Ave. NE, Suite P, Minneapolis, Minnesota 55432, USA  
Phone: (888) 523-1246 Fax.: (763) 780-2988  
Email: [info@ibl-america.com](mailto:info@ibl-america.com) Web: [www.ibl-america.com](http://www.ibl-america.com)

# Product information

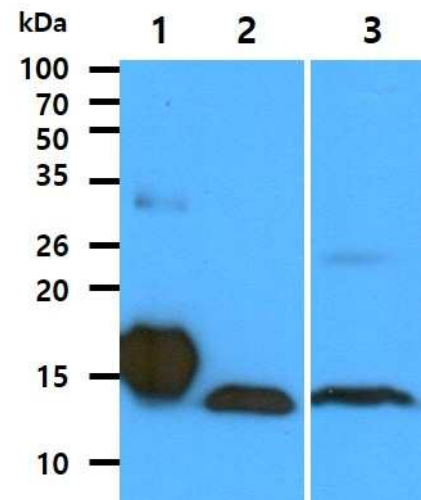
## Western blot analysis

The Recombinant protein(50ng) and Cell lysates (40ug) were resolved by SDS-PAGE, transferred to PVDF membrane and probed with anti-human FABP1 antibody (1:1000). Proteins were visualized using a goat anti-mouse secondary antibody conjugated to HRP and an ECL detection system.

Lane 1.: FABP1 Recombinant protein

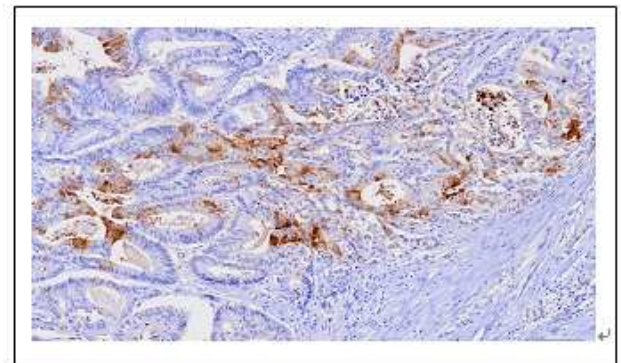
Lane 2.: HepG2 cell lysate

Lane 3.: Liver tissues lysate



## Immunohistochemistry

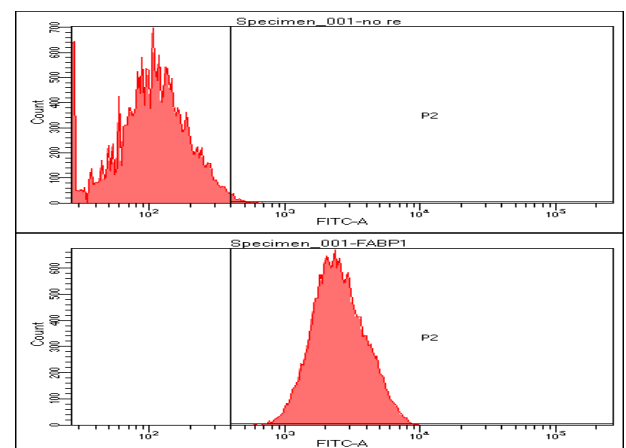
Paraffin embedded sections of human colon cancer tissue were incubated with anti-human FABP1 (1:100) for 2 hours at room temperature. Antigen retrieval was performed in 0.1M sodium citrate buffer and detected using Diaminobenzidine (DAB)



Human colon cancer tissue

## Flow cytometry

Flow cytometry analysis of FABP1 in Hep3B cell line, staining at 2-5ug for  $1 \times 10^6$  cells. The secondary antibody used goat anti-mouse IgG Alexa fluor 488 conjugate.



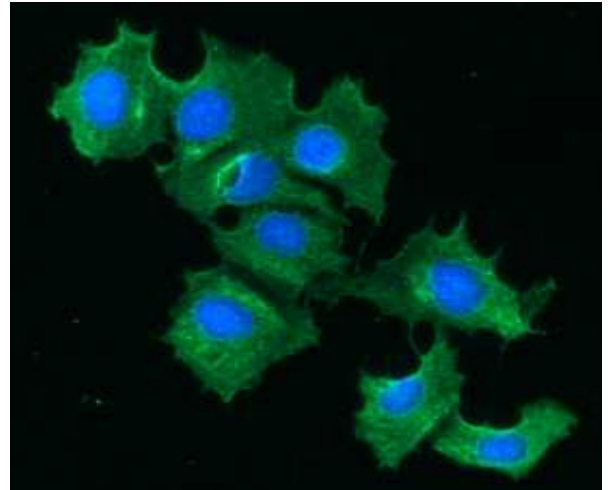
For research use only. This product is not intended or approved for human, diagnostics or veterinary use.

# Product information

---

## ICC/IF analysis

ICC/IF analysis of FABP1 in Hep3B cells line, stained with DAPI (Blue) for nucleus staining and monoclonal anti-human FABP1 antibody (1:100) with goat anti-mouse IgG-Alexa fluor 488 conjugate (Green).



**General references:** Atshaves BP, *et al.* (2004) *Mol Cell Biochem.* **259(1-2)**, 115-29  
Nakamura T, *et al.* (2005) *Diabetes Care.* **28(11)**, 2728-32

---

For research use only. This product is not intended or approved for human, diagnostics or veterinary use.