

## Monoclonal anti-human EPM2A antibody (clone K2A3)

Mouse IgG<sub>1</sub>, κ

Cat. No. IBAEP0911

**Immunogen:** Recombinant human EPM2A (243-331aa) purified from *E. coli*

**NCBI Accession No.:** NP\_005661

**Isotype:** Mouse IgG<sub>1</sub> heavy chain and κ light chain

**Clone:** Anti-human EPM2A mAb, clone k2A3, is derived from hybridization of mouse F0 myeloma cells with spleen cells from BALB/c mice immunized with a recombinant human EPM2A protein.

**Description:** Epilepsy, progressive myoclonus type 2A (EPM2A), also known as laforin, is a dual-specificity phosphatase that associates with polyribosomes. The protein may be involved in the control of glycogen metabolism, particularly in monitoring for and preventing the formation of poorly branched glycogen molecules. Defects in EPM2A are a cause of progressive myoclonic epilepsy type 2 (EPM2), also known as Lafora disease. EPM2 is an autosomal recessive and severe form of adolescent-onset progressive epilepsy.

**Concentration:** 1 mg/ml

**Form:** Liquid. In Phosphate-Buffered Saline (pH 7.4) with 0.02% Sodium Azide, 10% Glycerol

**Storage:** Can be stored at +4°C. For long term storage, aliquot and store at -20°C. Avoid repeated freezing and thawing cycles.

**Usage:** The antibody has been tested by ELISA, Western blot analysis, Flow cytometry and ICC/IF to assure specificity and reactivity. Since application varies, however, each investigation should be titrated by the reagent to obtain optimal results.

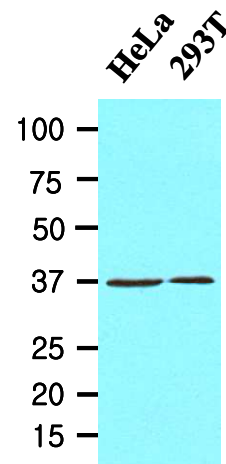
**Application:** ELISA, WB, Flow cytometry, ICC/IF

**For research use only. This product is not intended or approved for human, diagnostics or veterinary use.**

# Product information

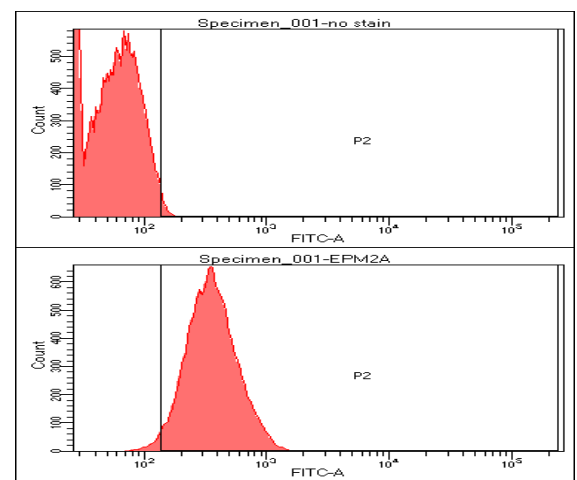
## Western blot analysis

Cell lysates of HeLa and 293T (20ug) were resolved by SDS-PAGE, transferred to NC membrane and probed with anti-human EPM2A (1:1000). Proteins were visualized using a goat anti-mouse secondary antibody conjugated to HRP and an ECL detection system.



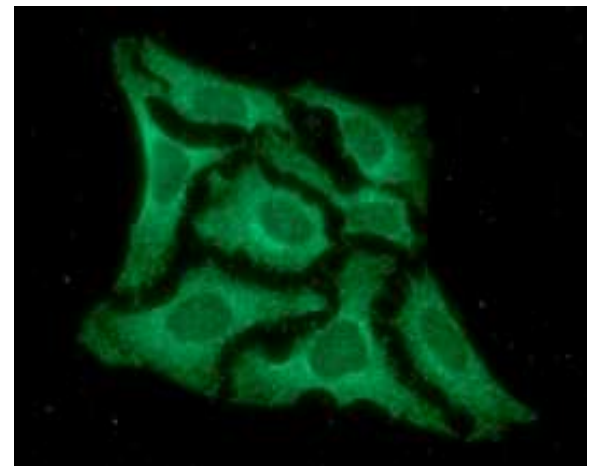
## Flow cytometry

Flow cytometry analysis of EPM2A in HeLa cell line, staining at 2-5ug for  $1 \times 10^6$  cells. The secondary antibody used goat anti-mouse IgG Alexa fluor 488 conjugate.



## ICC/IF analysis

ICC/IF analysis of EPM2A in HeLa cells line, stained with DAPI (Blue) for nucleus staining and monoclonal anti-human EPM2A antibody (1:100) with goat anti-mouse IgG-Alexa fluor 488 conjugate (Green).



- General references** Tagliabracci V.S., *et al.* (2007) *Proc Natl Acad Sci U S A.* **104**(49):19262–19266  
 Wang W., *et al.* (2006) *Biochem Biophys Res Cimmun.* **350**(3):588-592  
 Ganesh S., *et al.* (2002) *Hum Mol Genet.* **11**:1263-1271

For research use only. This product is not intended or approved for human, diagnostics or veterinary use.