

Monoclonal anti-human EphA2 antibody (clone 3D7)

Mouse IgG_{2b}, κ

Cat. No. IBAEA0909

Immunogen: Recombinant human EphA2 (559-976aa) purified from *E. coli*.

NCBI Accession No.: NP_004422

Isotype: Mouse IgG_{2b} heavy chain and κ light chain

Clone: Anti-human EphA2 mAb, clone 3D7, is derived from hybridization of mouse F0 myeloma cells with spleen cells from BALB/c mice immunized with a recombinant human EphA2 protein.

Description: The Eph family of receptors is the largest known subfamily of receptor tyrosine kinases (RTK). Eph RTKs and their ligands, the ephrins, are frequently overexpressed in a variety of cancers and tumor cell lines. One Eph family member, EphA2, is also overexpressed in a wide variety of cancers, including breast, small-cell lung and gastrointestinal cancers, melanomas, and neuroblastomas. The ephrin-Eph interactions are important in development, especially in cell-cell interactions involved in nervous system patterning and possibly in cancer.

Concentration: 1mg/ml

Form: Liquid. In Phosphate-Buffered Saline (pH 7.4) with 0.02% Sodium Azide, 10% Glycerol

Storage: Can be stored at +4°C. For long term storage, aliquot and store at -20°C. Avoid repeated freezing and thawing cycles.

Usage: The antibody has been tested by ELISA, Western blot analysis and Immunohistochemistry to assure specificity and reactivity. Since application varies, however, each investigation should be titrated by the reagent to obtain optimal results.

Application: ELISA, WB, Immunohistochemistry

For research use only. This product is not intended or approved for human, diagnostics or veterinary use.



Manufactured for:
Immuno-Biological Laboratories, Inc. (IBL-America)
8201 Central Ave. NE, Suite P, Minneapolis, Minnesota 55432, USA
Phone: (888) 523-1246 Fax.: (763) 780-2988
Email: info@ibl-america.com Web: www.ibl-america.com

Product information

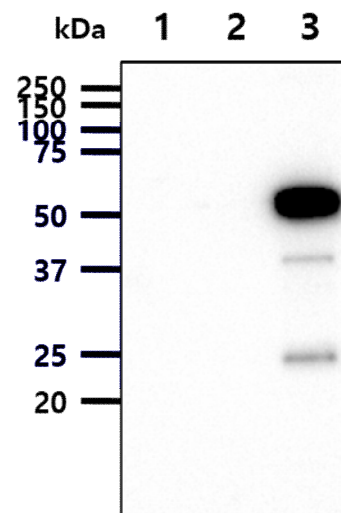
Western blot analysis

The cell lysates (10ug) were resolved by SDS-PAGE, transferred to PVDF membrane and probed with anti-human EphA2 antibody (1:1000). Proteins were visualized using a goat anti-mouse secondary antibody conjugated to HRP and an ECL detection system.

Lane 1.: 293T cell lysate

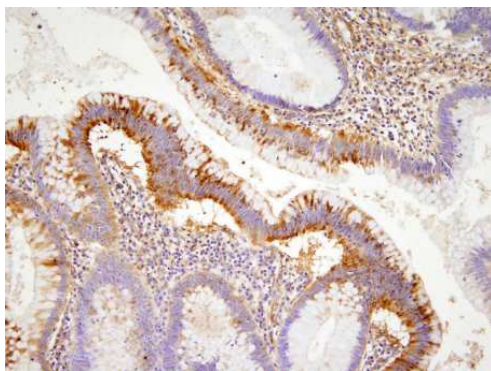
Lane 2.: EphA2 extracellular domain transfected 293T cell lysate

Lane 3.: EphA2 cytoplasmic domain transfected 293T cell lysate

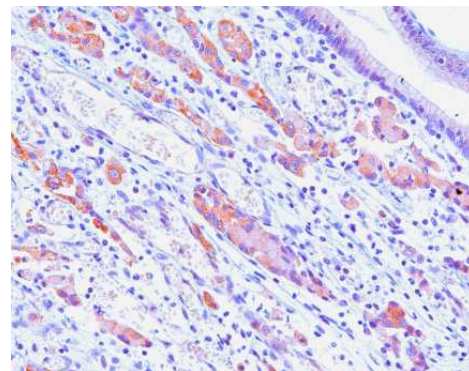


Immunohistochemistry

Paraffin embedded sections of human colon and gastric cancer tissue were incubated with anti-human EphA2 (1:100) for 2 hours at room temperature. Antigen retrieval was performed in 0.1M sodium citrate buffer and detected using Diaminobenzidine (DAB)



Human colon cancer



Human gastric cancer

General references: Ireton RC, Chen J (2005) *Curr Cancer Drug Targets*. **5(3)4**: 149-57.
Nakamoto M, Berqemann AD (2002) *Microsc Res Tech*. **59(1)**: 58-67.

For research use only. This product is not intended or approved for human, diagnostics or veterinary use.