

Monoclonal anti-human DACT3 antibody (clone 2A5)

Mouse IgG₁, κ

Cat. No. IBADA0925

Immunogen: Recombinant human DACT3 (89-202aa) purified from *E. coli*

NCBI Accession No.: NP_659493

Isotype: Mouse IgG₁ heavy chain and κ light chain

Clone: Anti-human DACT3 mAb, clone 2A5, is derived from hybridization of mouse F0 myeloma cells with spleen cells from BALB/c mice immunized with a recombinant human DACT3 protein.

Description: DACT3, a member of the DACT (Dpr/Frodo) gene family, plays an important role in a negative regulator of Wnt/-catenin signaling. Unlike other Wnt signaling inhibitors that are silenced by DNA methylation, DACT3 repression is associated with bivalent histone modifications.

Concentration: 1 mg/ml

Form: Liquid. In Phosphate-Buffered Saline (pH 7.4) with 0.02% Sodium Azide, 10% Glycerol.

Storage: Can be stored at +4°C. For long term storage, aliquot and store at -20°C. Avoid repeated freezing and thawing cycles.

Usage: The antibody has been tested by ELISA, Western blot and immunohistochemistry analysis to assure specificity and reactivity. Since application varies, however, each investigation should be titrated by the reagent to obtain optimal results. Recommended dilution range for Western blot is 1:250 ~ 1:500 and immunohistochemistry analysis is 1:50.

Recommended starting dilution for Western blot is 1:250 and Immunohistochemistry is 1:50.

Application: ELISA, WB, IHC

For research use only. This product is not intended or approved for human, diagnostics or veterinary use.

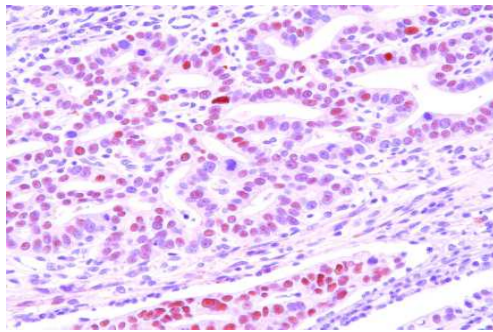


Manufactured for:

Immuno-Biological Laboratories, Inc. (IBL-America)
8201 Central Ave. NE, Suite P, Minneapolis, Minnesota 55432, USA
Phone: (888) 523-1246 Fax.: (763) 780-2988
Email: info@ibl-america.com Web: www.ibl-america.com

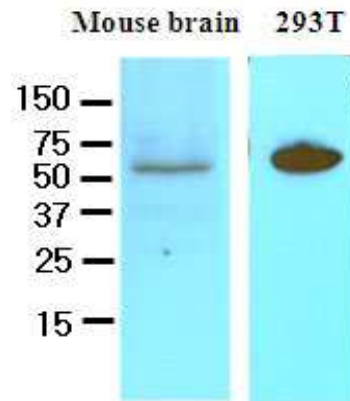
Immunohistochemistry

Paraffin embedded sections of human gastric cancer tissue were incubated with anti-human DACT3 (1:50) for 2 hours at room temperature. Antigen retrieval was performed in 0.1M sodium citrate buffer and detected using Diaminobenzidine (DAB)



Western blot analysis

Cell lysates of mouse brain and 293T (50ug) were resolved by SDS-PAGE, transferred to NC membrane and probed with anti-human DACT3 (1:250). Proteins were visualized using a goat anti-mouse secondary antibody conjugated to HRP and an ECL detection system.



General references: Jiang X, *et al.*, (2008) *Cancer Cell*. **13**(6):529–41

Fisher DA, *et al.*, (2006) *Dev Dyn*. **235**(9):2620–30

For research use only. This product is not intended or approved for human, diagnostics or veterinary use.



Manufactured for:

Immuno-Biological Laboratories, Inc. (IBL-America)
8201 Central Ave. NE, Suite P, Minneapolis, Minnesota 55432, USA

Phone: (888) 523-1246 Fax.: (763) 780-2988

Email: info@ibl-america.com Web: www.ibl-america.com

For research use only. This product is not intended or approved for human, diagnostics or veterinary use.



Manufactured for:

Immuno-Biological Laboratories, Inc. (IBL-America)
8201 Central Ave. NE, Suite P, Minneapolis, Minnesota 55432, USA
Phone: (888) 523-1246 Fax.: (763) 780-2988
Email: info@ibl-america.com Web: www.ibl-america.com