

Monoclonal anti-human CRP antibody (clone 5A9)

Mouse IgG_{2a}, κ

Cat. No. IBACR0631

Immunogen: Recombinant human CRP (19-224aa) purified from *E. coli*

NCBI Accession No.: NP_000558

Isotype: Mouse IgG_{2a} heavy chain and κ light chain

Clone: Anti-human CRP mAb, clone 5A9, is derived from hybridization of mouse SP2/O myeloma cells with spleen cells from BALB/c mice immunized with a recombinant human CRP protein.

Description: C-reactive protein (CRP) is an acute-phase protein with a well-known association with infection and other inflammatory conditions. Mild elevations in C-reactive protein concentration predict myocardial infarction, stroke, and vascular death in a variety of clinical settings. Despite the lack of specific evidence that C-reactive protein levels are independently associated with cardiovascular risk in patients with hypertension, the prognostic value of C-reactive protein has proven to be complementary to that of blood pressure values.

Concentration: 1 mg/ml

Form: Liquid. In Phosphate-Buffered Saline (pH 7.4) with 0.02% Sodium Azide, 10% Glycerol

Storage: Can be stored at +4°C. For long term storage, aliquot and store at -20°C or -70°C. Avoid repeated freezing and thawing cycles.

Usage: The antibody has been tested by ELISA, Western blot analysis, ICC/IF and Flow cytometry to assure specificity and reactivity. Since application varies, however, each investigation should be titrated by the reagent to obtain optimal results.

Application: ELISA, WB, ICC/IF, Flow cyt

For research use only. This product is not intended or approved for human, diagnostics or veterinary use.



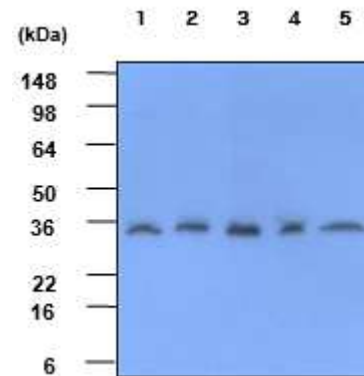
Manufactured for:
Immuno-Biological Laboratories, Inc. (IBL-America)
8201 Central Ave. NE, Suite P, Minneapolis, Minnesota 55432, USA
Phone: (888) 523-1246 Fax.: (763) 780-2988
Email: info@ibl-america.com Web: www.ibl-america.com

Product information

Western blot analysis

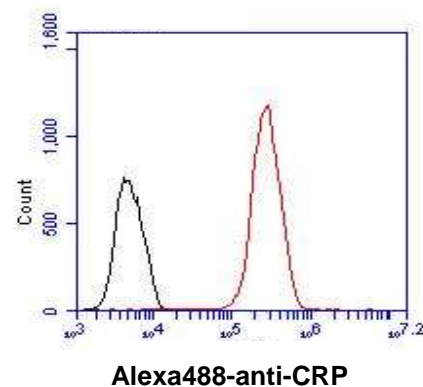
Cell lysates of NIH-3T3, HepG2, Jurkat, HeLa and SH-SY5Y (each 40ug) were resolved by SDS-PAGE, transferred to PVDF membrane and probed with anti-human CRP (1:1000). Proteins were visualized using a goat anti-mouse secondary antibody conjugated to HRP and an ECL detection system.

Lane1 : NIH-3T3
 Lane2 : HepG2
 Lane3 : Jurkat
 Lane4 : HeLa
 Lane5 : SH-SY5Y



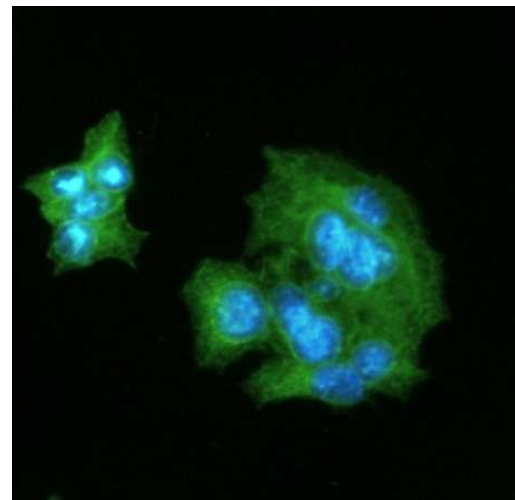
Flow cytometry

Flow cytometry analysis of CRP in HepG2 cell line, staining at 2-5ug for 1×10^6 cells (red line). The secondary antibody used goat anti-mouse IgG Alexa fluor 488 conjugate. Isotype control antibody was mouse IgG (black line).



ICC/IF analysis

ICC/IF analysis of CRP in HepG2 cells line, stained with DAPI (Blue) for nucleus staining and monoclonal anti-human CRP antibody (1:100) with goat anti-mouse IgG-Alexa fluor 488 conjugate (Green).



General references: Alexander J. S *et al.*, (2000) *Infect Immun.* **68(10)**: 5652-5656
 Schillaci G. *et al.*, (2006) *Nutr Metab Cardiovasc Dis.* **16(7)**: 500-508.

For research use only. This product is not intended or approved for human, diagnostics or veterinary use.