

Monoclonal anti-human Cofilin1 antibody (clone AT1C1)

Mouse IgG₁, κ

Cat. No. IBACO0927

Immunogen: Recombinant human Cofilin1 (1-166aa) purified from *E. coli*

NCBI Accession No.: NP_005498

Isotype: Mouse IgG₁ heavy chain and κ light chain

Clone: Anti-human Cofilin 1 mAb, clone AT1C1, is derived from hybridization of mouse F0 myeloma cells with spleen cells from BALB/c mice immunized with a recombinant human Cofilin 1 protein.

Description: Cofilin is a family of actin-binding proteins which disassembles actin filaments. It is a widely distributed intracellular actin-modulating protein that binds and depolymerizes filamentous F-actin and inhibits the polymerization of monomeric G-actin in a pH-dependent manner. It is involved in the translocation of actin-cofilin complex from cytoplasm to nucleus.

Concentration: 1 mg/ml

Form: Liquid. In Phosphate-Buffered Saline (pH 7.4) with 0.02% Sodium Azide, 10% Glycerol

Storage: Can be stored at +4C. For long term storage, aliquot and store at -20C. Avoid repeated freezing and thawing cycles.

Usage: The antibody has been tested by ELISA, Western blot analysis, ICC/IF and Flow cytometry to assure specificity and reactivity. Since application varies, however, each investigation should be titrated by the reagent to obtain optimal results.

Application: ELISA, WB, ICC/IF, Flow cytometry

For research use only. This product is not intended or approved for human, diagnostics or veterinary use.



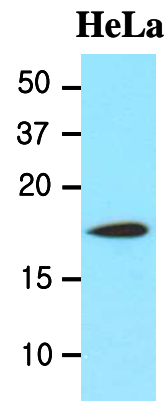
Manufactured for:

Immuno-Biological Laboratories, Inc. (IBL-America)
8201 Central Ave. NE, Suite P, Minneapolis, Minnesota 55432, USA
Phone: (888) 523-1246 Fax.: (763) 780-2988
Email: info@ibl-america.com Web: www.ibl-america.com

Product information

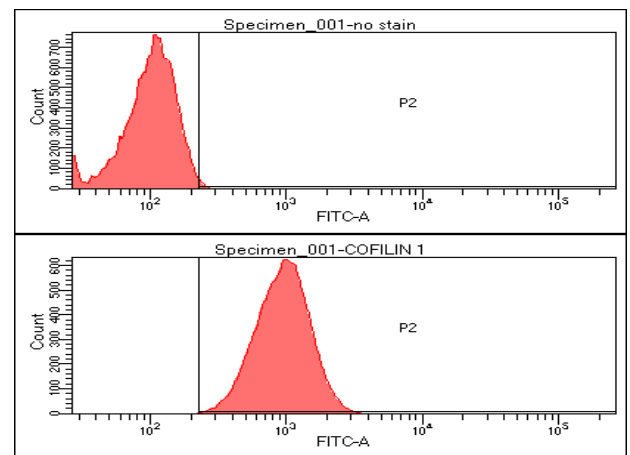
Western blot analysis

The lysates of HeLa (20ug) were resolved by SDS-PAGE, transferred to NC membrane and probed with anti-human Cofilin 1(1:1000) antibody. Proteins were visualized using a goat anti-mouse secondary antibody conjugated to HRP and an ECL detection system.



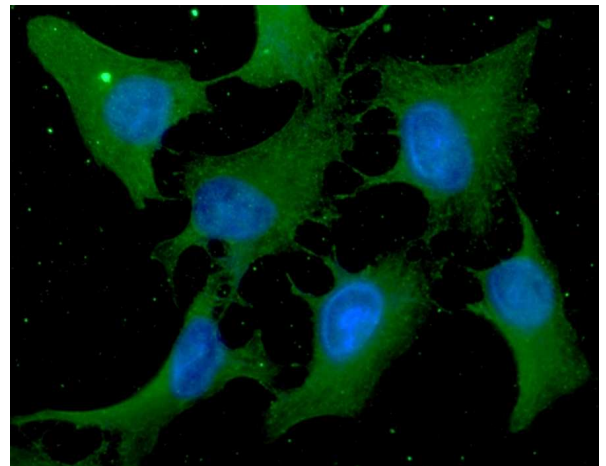
Flow cytometry

Flow cytometry analysis of Cofilin1 in HeLa cell line, staining at 2-5ug for 1×10^6 cells. The secondary antibody used goat anti-mouse IgG Alexa fluor 488 conjugate.



ICC/IF analysis

ICC/IF analysis of Cofilin1 in HeLa cells line, stained with DAPI (Blue) for nucleus staining and monoclonal anti-human Cofilin1 antibody (1:100) with goat anti-mouse IgG-Alexa fluor 488 conjugate (Green).



- General references:** Mannherz H.G., *et al.* (2007) *J Mol Biol* 366(3):745-755
 Olsen J.V., *et al.* (2006) *Cell* 127(3):635-648
 Yang N., *et al.* (1998) *Nature* 393(6687):809-812

For research use only. This product is not intended or approved for human, diagnostics or veterinary use.