

Monoclonal anti-human Clusterin antibody (clone 1A11)

Mouse IgG₁, κ

Cat. No. IBACL0711

Immunogen: Recombinant human Clusterin (1-333aa) purified from *E. coli*

NCBI Accession No.: NP_001822

Isotype: Mouse IgG₁ heavy chain and κ light chain

Clone: Anti-human Clusterin mAb, clone 1A11, is derived from hybridization of mouse SP2/O myeloma cells with spleen cells from BALB/c mice immunized with a recombinant human Clusterin protein.

Description: Clusterin has been implicated in numerous processes including active cell death, immune regulation, cell adhesion and morphological transformation. Clusterin (previously named SP-40) is a glycoprotein, 80kDa comprising two distinct 40kDa polypeptide chains. It shows marked similarity, both physicochemically and in immunohistological distribution, to the single chain, 80kDa, Sproteine, an additional component of the SC5b-9 complex. Clusterin is a secreted glycoprotein of which the exact function remains a matter for speculation.

Concentration: 1 mg/ml

Form: Liquid. In Phosphate-Buffered Saline (pH 7.4) with 0.02% Sodium Azide, 10% Glycerol

Storage: Can be stored at +4°C. For long term storage, aliquot and store at -20°C. Avoid repeated freezing and thawing cycles.

Usage: The antibody has been tested by ELISA, Western blot analysis, ICC/IF, IHC and Flow cytometry to assure specificity and reactivity. Since application varies, however, each investigation should be titrated by the reagent to obtain optimal results. Recommended starting dilution for Western blot analysis is 1:1000.

Application: ELISA, WB, Flow cytometry, ICC/IF, IHC

For research use only. This product is not intended or approved for human, diagnostics or veterinary use.



Manufactured for:

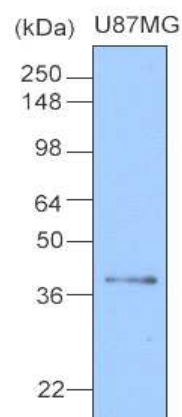
Immuno-Biological Laboratories, Inc. (IBL-America)
8201 Central Ave. NE, Suite P, Minneapolis, Minnesota 55432, USA
Phone: (888) 523-1246 Fax: (763) 780-2988
Email: info@ibl-america.com Web: www.ibl-america.com

Product information



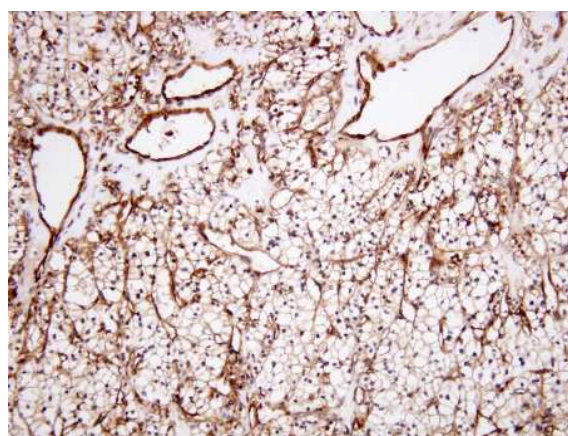
Western blot analysis

Cell lysates of U87MG(20ug) were resolved by SDS-PAGE, transferred to NC membrane and probed with anti-human Clusterin (1:1000). Proteins were visualized using a goat anti-mouse secondary antibody conjugated to HRP and an ECL detection system.



Immunohistochemistry

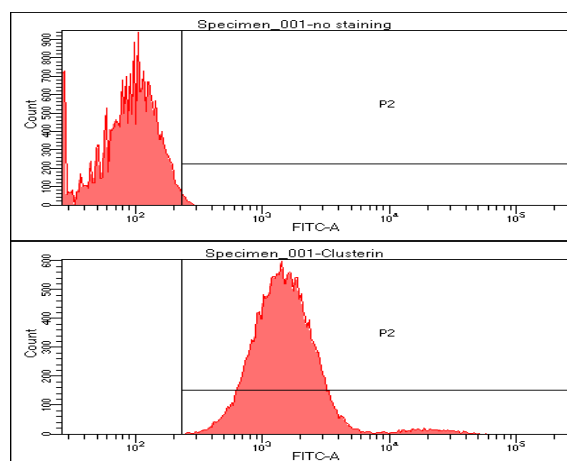
Paraffin embedded sections of human renal cell carcinoma tissue were incubated with anti-human Clusterin (1:100) for 2 hours at room temperature. Antigen retrieval was performed in 0.1M sodium citrate buffer and detected using Diaminobenzidine (DAB).



Human renal cell carcinoma tissue

Flow cytometry

Flow cytometry analysis of Clusterin in U87MG cell line, staining at 2-5ug for 1×10^6 cells. The secondary antibody used goat anti-mouse IgG Alexa fluor 488 conjugate.



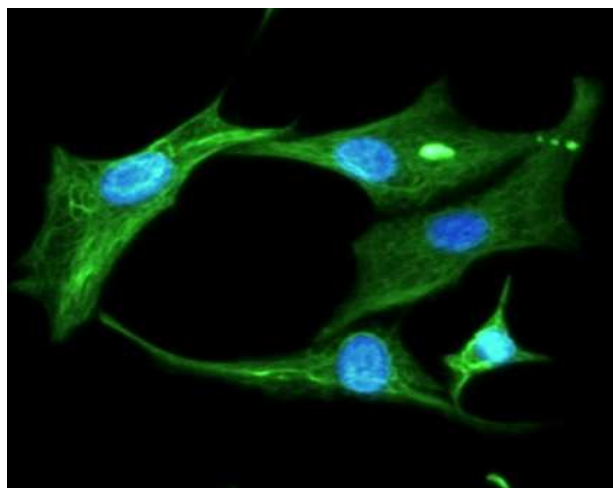
For research use only. This product is not intended or approved for human, diagnostics or veterinary use.



Manufactured for:
Immuno-Biological Laboratories, Inc. (IBL-America)
8201 Central Ave. NE, Suite P, Minneapolis, Minnesota 55432, USA
Phone: (888) 523-1246 Fax: (763) 780-2988
Email: info@ibl-america.com Web: www.ibl-america.com

ICC/IF analysis

ICC/IF analysis of Clusterin in U87MG cells line, stained with DAPI (Blue) for nucleus staining and monoclonal anti-human Clusterin antibody (1:100) with goat anti-mouse IgG-Alexa fluor 488 conjugate (Green).



General references

Maximino R *et al.*, (2000) *Am J Pathol* 157(2):393–399

Ingrid C.G *et al.*, (1998) *Biochem J* 331:231–237

Maximino R *et al.*, (1990) *J Clin Invest* 85:1477–1486

Fabien L *et al.*, (2006) *Biochem J* 395(1):223–231

For research use only. This product is not intended or approved for human, diagnostics or veterinary use.



Manufactured for:

Immuno-Biological Laboratories, Inc. (IBL-America)
8201 Central Ave. NE, Suite P, Minneapolis, Minnesota 55432, USA
Phone: (888) 523-1246 Fax.: (763) 780-2988
Email: info@ibl-america.com Web: www.ibl-america.com