

Monoclonal anti-human CD44 antibody (clone 5C10)

Mouse IgG_{2b}, κ

Cat. No. IBACD0826

Immunogen: Recombinant human CD44 (21-145aa) purified from *E. coli*

NCBI Accession No.: NP_001001391

Isotype: Mouse IgG_{2b} heavy chain and κ light chain

Clone: Anti-human CD44 mAb, clone 5C10, is derived from hybridization of mouse F0 myeloma cells with spleen cells from BALB/c mice immunized with a recombinant human CD44 protein.

Description: CD44 is a broadly distributed transmembrane glycoprotein that plays a critical role in a variety of cellular behaviors, including adhesion, migration, invasion, and survival. CD44 mediates cell–cell and cell–matrix interactions in a large part through its affinity for hyaluronan (HA), a glycosaminoglycan constituent of extracellular matrices, but also potentially through its affinity for other ligands such as osteopontin, collagens, and matrix metalloproteinases (MMPs). Variants of CD44 are expressed in tissues during development, including embryonic epithelia. Known functions of CD44 are cellular adhesion (aggregation and migration), hyaluronate degradation, lymphocyte activation, lymph node homing, myelopoiesis and lymphopoiesis, angiogenesis, and release of cytokines. The functions of CD44 are principally dependant on cellular adhesion in one setting or another

Concentration: 1mg/ml

Form: Liquid. In Phosphate-Buffered Saline (pH 7.4) with 0.02% Sodium Azide, 10% Glycerol.

Storage: Can be stored at +4°C. For long term storage, aliquot and store at -20°C. Avoid repeated freezing and thawing cycles.

Usage: The antibody has been tested by ELISA and Western blot analysis to assure specificity and reactivity.

For research use only. This product is not intended or approved for human, diagnostics or veterinary use.



Manufactured for:

Immuno-Biological Laboratories, Inc. (IBL-America)
8201 Central Ave. NE, Suite P, Minneapolis, Minnesota 55432, USA

Phone: (888) 523-1246

Fax.: (763) 780-2988

Email: info@ibl-america.com

Web: www.ibl-america.com

Product information

Since application varies, however, each investigation should be titrated by the reagent to obtain optimal results.

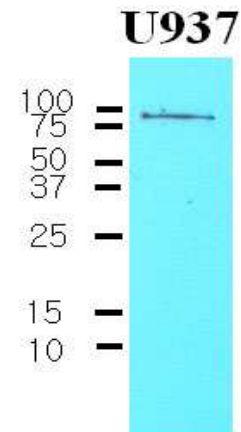
Recommended dilution range for Western blot analysis is 1:1,000 ~ 2,000.

Recommended starting dilution is 1:1,000.

Application: ELISA, WB

Western blot analysis

The Cell lysates of U937 (30ug) were resolved by SDS-PAGE, transferred to NC membrane and probed with anti-human CD44 (1:1000). Proteins were visualized using a goat anti-mouse secondary antibody conjugated to HRP and an ECL detection system.



General references: Cichy, J. and Pure, E. (2003) *J.Cell Biol.* 161, 839-843

Sneath RJ, Mangham DC (1998) *Mol Pathol.* 51(4):191-200

For research use only. This product is not intended or approved for human, diagnostics or veterinary use.