

Human Calmodulin 2/CALM2 antibody

Catalog Number: IBACA0830



PRODUCT INFORMATION

Catalog number

ACA0830

Clone No.

J4D8

Product type

Monoclonal Antibody

UnitProt No.

P0DP24

NCBI Accession No.

NP_001734

Alternative Names

PHKD, CAMII, PHKD2, Calmodulin 2, CALM 2, Calmodulin2, CAM II, LP7057 protein, PHKD 2, Phosphorylase kinase delta, Calmodulin-2, CALM2

PRODUCT SPECIFICATION

Antibody Host

Mouse

Reacts With

Human

Concentration

1mg/ml (determined by BCA assay)

Formulation

Liquid in. Phosphate-Buffered Saline (pH 7.4) with 0.02% Sodium Azide, 10% glycerol

Immunogen

Recombinant human Calmodulin (1-149aa) purified from E. coli

Isotype

IgG2a kappa

Purification Note

By protein-G affinity chromatography

Application

ELISA, WB, ICC/IF, FACS

Usage

The antibody has been tested by ELISA, Western blot, ICC/IF and FACS analysis to assure specificity and reactivity. Since application varies, however, each investigation should be titrated by the reagent to obtain optimal results.

For research use only. This product is not intended or approved for human, diagnostics or veterinary use.

Manufactured for:

Immuno-Biological Laboratories, Inc. (IBL-America)

8201 Central Ave. NE, Suite P, Minneapolis, Minnesota 55432, USA

Phone: (888) 523-1246 Fax.: (763) 780-2988

Email: info@ibl-america.com Web: www.ibl-america.com

Human Calmodulin 2/CALM2 antibody

Catalog Number: IBACA0830



Storage

Can be stored at +2C to +8C for 1 week. For long term storage, aliquot and store at -20C to -80C. Avoid repeated freezing and thawing cycles.

BACKGROUND

Description

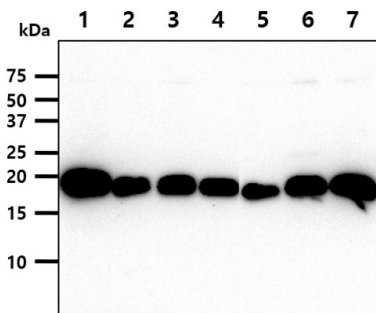
Calmodulin has been known to act as an intracellular calcium sensor protein. When the intracellular Ca²⁺ concentration increases, calmodulin can bind up to four Ca²⁺, changing its conformation and regulating cellular functions such as activation or inhibition of a large number of enzymes, ion channels, and receptors.

General References

Zhang M., et al. (1998). *Biochem Cell Biol.* 76(2-3):313-23.
James.P., et al. (1995). *Trend Biochem Sci.* 20: 38-42.

DATA

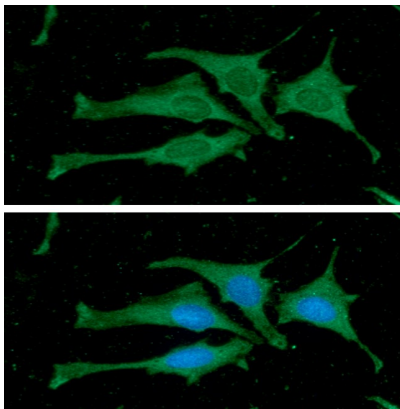
Western blot analysis (WB)



The cell lysates (40ug) were resolved by SDS-PAGE, transferred to PVDF membrane and probed with anti-human Calmodulin antibody (1:1000). Proteins were visualized using a goat anti-mouse secondary antibody conjugated to HRP and an ECL detection system.

Lane 1.: NIH3T3 cell lysate
Lane 2.: HeLa cell lysate
Lane 3.: Jurkat cell lysate
Lane 4.: A549 cell lysate
Lane 5.: MCF7 cell lysate
Lane 6.: Ramos cell lysate
Lane 7.: PC3 cell lysate

Immunofluorescence (ICC/IF)



ICC/IF analysis of Calmodulin in HeLa cells. The cell was stained with ACA0830 (1:100). The secondary antibody (green) was used Alexa Fluor 488. DAPI was stained the cell nucleus (blue).

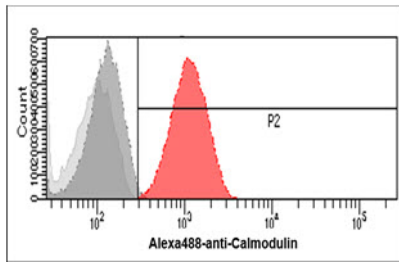
Flow cytometry (FACS)

For research use only. This product is not intended or approved for human, diagnostics or veterinary use.

Manufactured for:
Immuno-Biological Laboratories, Inc. (IBL-America)
8201 Central Ave. NE, Suite P, Minneapolis, Minnesota 55432, USA
Phone: (888) 523-1246 Fax.: (763) 780-2988
Email: info@ibl-america.com Web: www.ibl-america.com

Human Calmodulin 2/CALM2 antibody

Catalog Number: IBACA0830



Flow cytometry analysis of Calmodulin in HeLa cells. The cell was stained with ACA0830 at 2-5ug for 1×10^6 cells (red). A Goat anti mouse IgG (Alexa fluor 488) was used as the secondary antibody. Mouse monoclonal IgG was used as the isotype control (dark gray), cells without incubation with primary and secondary antibody was used as the negative control (light gray).

For research use only. This product is not intended or approved for human, diagnostics or veterinary use.

Manufactured for:
Immuno-Biological Laboratories, Inc. (IBL-America)
8201 Central Ave. NE, Suite P, Minneapolis, Minnesota 55432, USA
Phone: (888) 523-1246 Fax.: (763) 780-2988
Email: info@ibl-america.com Web: www.ibl-america.com