

Monoclonal anti-human C/EBP- β antibody (clone 47A1)

Mouse IgG₁, κ

Cat. No. IBABP0609

Immunogen: Recombinant human C/EBP- β (1-271 aa) purified from *E. coli*

NCBI Accession No.: NP_005185

Isotype: Mouse IgG₁ heavy chain and κ light chain

Clone: Anti-human C/EBP beta mAb, clone 47A1, is derived from hybridization of mouse SP2/O myeloma cells with spleen cells from BALB/c mice immunized with a recombinant human C/EBP beta protein.

Description: CCAAT/enhancer-binding proteins (C/EBPs) are a family of basic leucine zipper (bZIP) DNA binding proteins that play important roles in normal cellular differentiation and function in a variety of tissues. The C/EBP family is critical for innate immunity and inflammatory response, and consists of five core members: C/EBP α , C/EBP β , C/EBP δ , C/EBP ϵ , and C/EBP γ . Among these proteins, C/EBP β is usually highly expressed in liver, intestine, lung and adipose. C/EBP β has three isoforms, two activator, (LAP* and LAP) and a repressor (LIP). These isoforms are differentially translated from the same mRNA. The expression of these isoforms is developmentally and hormonally regulated.

Concentration: 1mg/ml

Form: Liquid. In Phosphate-Buffered Saline (pH 7.4) with 0.02% Sodium Azide, 10% Glycerol.

Storage: Can be stored at +4°C. For long term storage, aliquot and store at -20°C. Avoid repeated freezing and thawing cycles.

Usage: The antibody has been tested by ELISA and Western blot analysis to assure specificity and reactivity. Since application varies, however, each investigation should be titrated by the reagent to obtain optimal results. Recommended dilution range for Western blot analysis is 1:500 ~ 2,000.

For research use only. This product is not intended or approved for human, diagnostics or veterinary use.



Manufactured for:

Immuno-Biological Laboratories, Inc. (IBL-America)
8201 Central Ave. NE, Suite P, Minneapolis, Minnesota 55432, USA
Phone: (888) 523-1246 Fax.: (763) 780-2988
Email: info@ibl-america.com Web: www.ibl-america.com

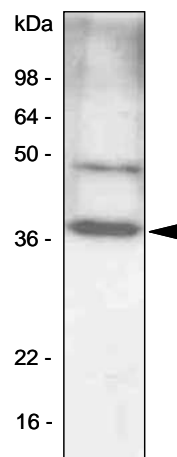
Product information

Recommended starting dilution is 1:1,000.

Application: ELISA, WB

Western blot analysis

NIH 3T3 cell lysates (30 µg) were resolved by SDS-PAGE, transferred to PVDF membrane and probed with anti-human C/EBP- β antibody (1:1,000). Protein was visualized using a goat anti-mouse secondary antibody conjugated to HRP and an ECL detection system.



General references: Lekstrom-Himes J. *et al.* (1998) *J Biol. Chem.* 273, 28545-28548
 Parkin SE. *et al.* (2002) *J Biol. Chem.*; 277, 23563-23572
 Su WC. *et al.* (2003) *J Biol. Chem.* 278, 51150-51158

For research use only. This product is not intended or approved for human, diagnostics or veterinary use.