

Monoclonal anti-human BMP7 antibody (clone 4E7)

Mouse IgG₁, κ

Cat. No. IBABM0615

Immunogen: Recombinant human BMP7 (293-431aa) purified from *E. coli*

NCBI Accession No.: NP_001710

Isotype: Mouse IgG₁ heavy chain and κ light chain

Clone: Anti-human BMP7 mAb, clone 4E7, is derived from hybridization of mouse SP2/O myeloma cells with spleen cells from BALB/c mice immunized with a recombinant human BMP7 protein.

Description: BMP-7 (bone morphogenetic protein-7), also known as OP-1 (osteogenic protein-1), is a member of the transforming growth factor β (TGF β) superfamily. BMP-7 plays an essential role during ontogeny of the mammalian eye and kidney, also, is expressed in heart, lung, small intestine, limb bud and teeth. In addition, noggin, one of the soluble BMP antagonists, regulated the action of BMPs on mesenchymal precursor cells, partially through a feedback type of inhibition

Concentration: 1 mg/ml

Form: Liquid. In Phosphate-Buffered Saline (pH 7.4) with 0.02% Sodium Azide, 10% Glycerol

Storage: Can be stored at +4C. For long term storage, aliquot and store at -20C. Avoid repeated freezing and thawing cycles.

Usage: The antibody has been tested by ELISA, Western blot analysis, ICC/IF and Flow cytometry to assure specificity and reactivity. Since application varies, however, each investigation should be titrated by the reagent to obtain optimal results.

Application: ELISA, WB, ICC/IF, Flow cytometry

For research use only. This product is not intended or approved for human, diagnostics or veterinary use.



Manufactured for:

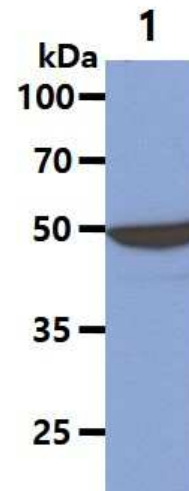
Immuno-Biological Laboratories, Inc. (IBL-America)
8201 Central Ave. NE, Suite P, Minneapolis, Minnesota 55432, USA
Phone: (888) 523-1246 Fax.: (763) 780-2988
Email: info@ibl-america.com Web: www.ibl-america.com

Product information

Western blot analysis

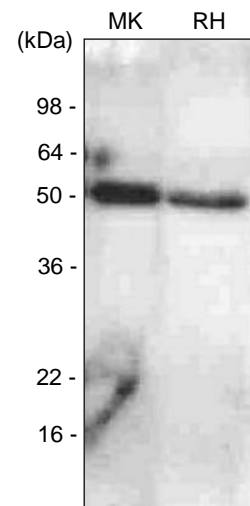
The Mouse tissue lysates (40ug) were resolved by SDS-PAGE, transferred to PVDF membrane and probed with anti-human BMP7 antibody (1:1000). Proteins were visualized using a goat anti-mouse secondary antibody conjugated to HRP and an ECL detection system.

Lane 1.: Mouse Brain tissue lysate



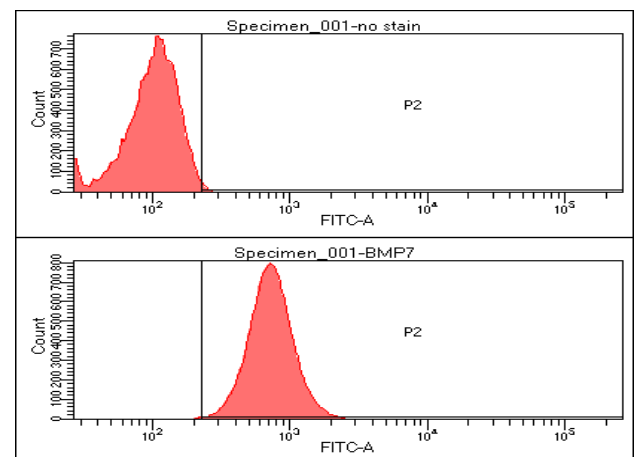
Western blot analysis

The extracts of mouse kidney (MK) and rat heart (RH) were resolved by SDS-PAGE, transferred to PVDF membrane and probed with anti-human BMP7 antibody (1:1,000). Protein was visualized using a goat anti-mouse secondary antibody conjugated to HRP and an ECL detection system.



Flow cytometry

Flow cytometry analysis of BMP7 in HeLa cell line, staining at 2-5ug for 1x10⁶ cells. The secondary antibody used goat anti-mouse IgG Alexa fluor 488 conjugate.

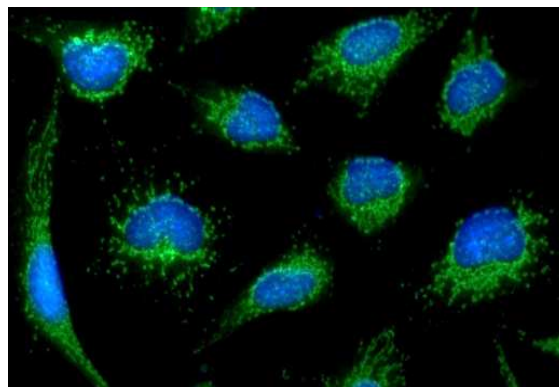


For research use only. This product is not intended or approved for human, diagnostics or veterinary use.

Product information

ICC/IF analysis

ICC/IF analysis of BMP7 in HeLa cells line, stained with DAPI (Blue) for nucleus staining and monoclonal anti-human BMP7 antibody (1:100) with goat anti-mouse IgG-Alexa fluor 488 conjugate (Green).



General references: Gregory KE., et al. (2005) *J Biol Chem.* **280**: 27970-27980.
Sampath TK., et al. (1990) *J Biol Chem.* **265**: 13198-13205.
Godin RE., et al. (1998) *Development.* **125**: 3473-3482.
Groppe J., et al. (2002) *Nature.* **420**: 636-642.

For research use only. This product is not intended or approved for human, diagnostics or veterinary use.



Manufactured for:

Immuno-Biological Laboratories, Inc. (IBL-America)
8201 Central Ave. NE, Suite P, Minneapolis, Minnesota 55432, USA
Phone: (888) 523-1246 Fax.: (763) 780-2988
Email: info@ibl-america.com Web: www.ibl-america.com