

Monoclonal anti-human BHMT antibody (clone 3D6)

Mouse IgG_{2a}, κ

Cat. No. IBABH0708

Immunogen: Recombinant human BHMT (1-406aa) purified from *E. coli*

NCBI Accession No.: NP_001704

Isotype: Mouse IgG_{2a} heavy chain and κ light chain

Clone: Anti-human BHMT mAb, clone 3D6, is derived from hybridization of mouse SP2/O myeloma cells with spleen cells from BALB/c mice immunized with a recombinant human BHMT protein.

Description: Betaine homocysteine methyltransferase (BHMT), a cytosolic enzyme, and its partial fragments were discovered as autolysosomal membrane proteins from rat liver in the presence of leupeptin. BHMT was also found in human liver. BHMT transfers a methyl group from betaine to homocysteine to form DMG (dimethylglycine) and Met. *In vivo*, liver BHMT expression is influenced by dietary changes in sulphur amino acids, choline and betaine.

Concentration: 1 mg/ml

Form: Liquid. In Phosphate-Buffered Saline (pH 7.4) with 0.02% Sodium Azide, 10% Glycerol

Storage: Can be stored at +4°C. For long term storage, aliquot and store at -20°C. Avoid repeated freezing and thawing cycles.

Usage: The antibody has been tested by ELISA, Western blot analysis, ICC/IF and Flow cytometry to assure specificity and reactivity. Since application varies, however, each investigation should be titrated by the reagent to obtain optimal results.

Application: ELISA, WB, Flow cytometry, ICC/IF

For research use only. This product is not intended or approved for human, diagnostics or veterinary use.



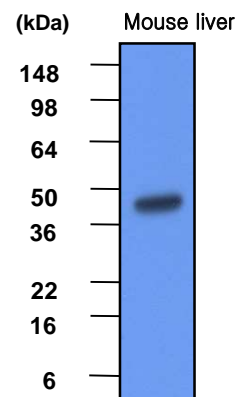
Manufactured for:
Immuno-Biological Laboratories, Inc. (IBL-America)
8201 Central Ave. NE, Suite P, Minneapolis, Minnesota 55432, USA
Phone: (888) 523-1246 Fax: (763) 780-2988
Email: info@ibl-america.com Web: www.ibl-america.com

Product information



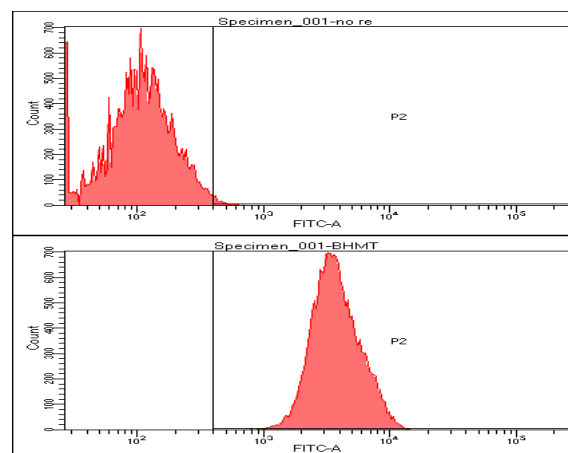
Western blot analysis

The extracts of mouse liver (each 20ug) were resolved by SDS-PAGE, transferred to PVDF membrane and probed with anti-human BHMT (1:1000). Proteins were visualized using a goat anti-mouse secondary antibody conjugated to HRP and an ECL detection system.



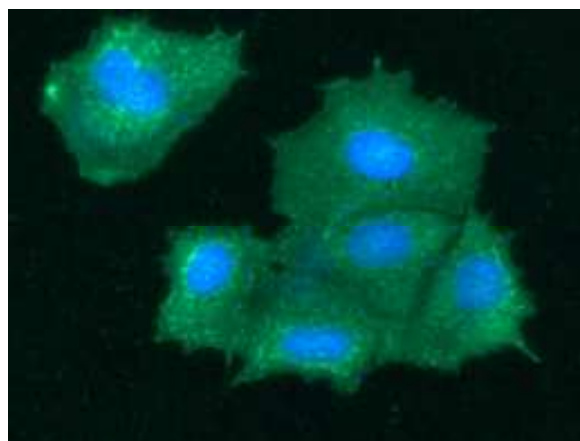
Flow cytometry

Flow cytometry analysis of BHMT in Hep3B cell line, staining at 2-5ug for 1×10^6 cells. The secondary antibody used goat anti-mouse IgG Alexa fluor 488 conjugate.



ICC/IF analysis

ICC/IF analysis of BHMT in Hep3B cells line, stained with DAPI (Blue) for nucleus staining and monoclonal anti-human BHMT antibody (1:100) with goat anti-mouse IgG-Alexa fluor 488 conjugate (Green).



- General references**
- Mckeever MP *et al.*, (1991) *Clin Sci* 81(4):551–556
 - Norihiko F *et al.*, (2001) *Biochem J* 129:313–320
 - Francisco G *et al.*, (2005) *Biochem J* 391:589–599
 - Catherine M *et al.*, (2005) *Biochem J* 392:443–448
 - Janet D. S *et al.*, (2006) *Biochem J* 395:363–371

For research use only. This product is not intended or approved for human, diagnostics or veterinary use.



Manufactured for:
Immuno-Biological Laboratories, Inc. (IBL-America)
8201 Central Ave. NE, Suite P, Minneapolis, Minnesota 55432, USA
Phone: (888) 523-1246 Fax: (763) 780-2988
Email: info@ibl-america.com Web: www.ibl-america.com