

Code No. 10131

**Anti-Human
KGF (5J2) Mouse IgG MoAb**

Volume : 200 µg

Lot No. :

Introduction : Keratinocyte Growth Factor (KGF) is a growth factor which affects epithelial cells specifically and it hardly affects mesenchymal cells like fibroblasts. Its receptor is K-sam, and it is said that the signals of differentiation and proliferation will be specifically transmitted to various epithelial cells which express the receptors.

Antigen : Recombinant Human KGF (*E. coli*)

Source : Mouse-Mouse hybridoma
(X63 - Ag 8.653 × BALB/c mouse spleen cells, supernatant)

Clone : 5J2 **Subclass** : IgG2a

Purification : Affinity purified with anti-mouse IgG

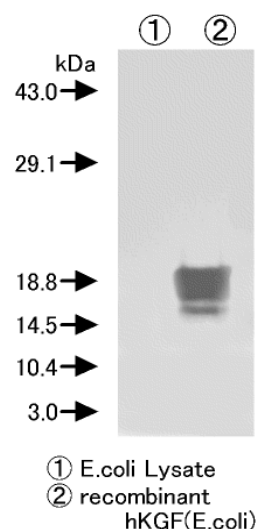
Form : Lyophilized product from 1 % BSA in PBS containing 0.05 % NaN₃

How to use : 1.0 mL deionized water will be added to the product, then its concentration comes to 200 µg/mL

Stability : Lyophilized product, 5 years at 2 - 8 °C
: Solution, 2 years at -20 °C

Application : This antibody can be used for western blotting in concentration of 5 µg/mL.

Specificity : The specificity was confirmed by WB (refer to the right below diagram)



For research use only, not for use in diagnostic procedures.

Distributed by:



Immuno-Biological Laboratories, Inc.
8201 Central Ave NE, Suite P
Minneapolis, MN 55432

Toll-Free: 888-523-1246
Email: info@IBL-America.com
Web: www.IBL-America.com