



User's Manual

Mouse IL-7 ELISA

For detection of IL-7 in mouse serum, plasma or cell.



Storage:

BE69035

96

2-8°C

RUO

For Research Use Only – Not for Use in Diagnostic Procedures.

1 INTRODUCTION

1.1 Intended Use

For detection of IL-7 in mouse serum, plasma or cell. For research use only, not for use in diagnostic procedures.

1.2 Background

Interleukin 7(IL-7) is a hematopoietic growth factor secreted by stromal cells in the red marrow and thymus. It is also produced by keratinocytes, dendritic cells, hepatocytes, neurons, and epithelial cells. IL-7 is a cytokine important for B and T cell development. This cytokine and the hepatocyte growth factor (HGF) form a heterodimer that functions as a pre-pro-B cell growth-stimulating factor. This cytokine is found to be a cofactor for V(D)J rearrangement of the T cell receptor beta (TCR β) during early T cell development. IL-7 promotes hematological malignancies (acute lymphoblastic leukemia, T cell lymphoma), and the elevated levels of IL-7 have also been detected in the plasma of HIV-infected patients.

2 PRINCIPLE OF THE TEST

This kit was based on sandwich enzyme-linked immune-sorbent assay technology. Anti- IL-7 polyclonal antibody was pre-coated onto 96-well plates. And the biotin conjugated anti- IL-7 polyclonal antibody was used as detection antibodies. The standards, test samples and biotin conjugated detection antibody were added to the wells subsequently, and wash with wash buffer. Avidin-Biotin-Peroxidase Complex was added and unbound conjugates were washed away with wash buffer. TMB substrates were used to visualize HRP enzymatic reaction. TMB was catalyzed by HRP to produce a blue color product that changed into yellow after adding acidic stop solution. The density of yellow is proportional to the IL-7 amount of sample captured in plate. Read the O.D. absorbance at 450nm in a microplate reader, and then the concentration of IL-7 can be calculated.

3 WARNINGS AND PRECAUTIONS

1. This kit is for research use only, not for use in diagnostic procedures.
2. Before the experiment, centrifuge each kit component for several minutes to bring down all reagents to the bottom of tubes.
3. It is recommend to measure each standard and sample in duplicate.
4. Do NOT let the plate completely dry at any time! Since the dry condition can inactivate the biological material on the plate.
5. Do not reuse pipette tips and tubes to avoid cross contamination.
6. Do not use the expired components or the components from different lot numbers.
7. To avoid the marginal effect of plate incubation for temperature differences (the marginal wells always get stronger reaction), it is recommend to equilibrate the ABC working solution and TMB substrate for at least 30 min at 37° before adding to wells.
8. The TMB substrate (Kit Component 8) is colorless and transparent before use. If not, please contact us for replacement.

4 REAGENTS

4.1 Reagents provided

1. One 96-well plate pre-coated with anti-Mouse IL-7 antibody
2. Lyophilized Mouse IL-7 standards: 2 tubes (10ng / tube)
3. Sample / Standard diluent buffer: 30ml
4. Biotin conjugated anti-Mouse IL-7 antibody (Concentrated): 130 μ l. Dilution: 1:100
5. Antibody diluent buffer: 12ml
6. Avidin-Biotin-Peroxidase Complex (ABC) (Concentrated): 130 μ l. Dilution: 1:100
7. ABC diluent buffer: 12ml
8. TMB substrate: 10ml
9. Stop solution: 10ml
10. Wash buffer(25X): 30ml

4.2 Materials required but not provided

1. 37° incubator
2. Microplate reader (wavelength: 450nm)
3. Precise pipette and disposable pipette tips
4. Automated plate washer
5. ELISA shaker
6. 1.5ml of Eppendorf tubes
7. Plate cover
8. Absorbent filter papers
9. Plastic or glass container with volume of above 1L

4.3 Storage Conditions / Expiration

Store at 4°C for frequent use, at -20°C for 8 months.

4.4 Preparation of sample and reagents

1. Sample

Isolate the test samples soon after collecting, then, analyze immediately (within 2 hours). Or aliquot and store at -20° for long term. Avoid multiple freeze-thaw cycles.

✧ **Cell:** Lyse cells thoroughly, centrifuge at 10000-14000 X g for 3-5 min, collect supernatant, analyze immediately or aliquot and store at -20°C.

✧ **Serum:** Coagulate the serum at room temperature (about 2 hours). Centrifuge at approximately 2000 x g for 20 min. Analyze the serum immediately or aliquot and store at -20°C.

✧ **Plasma:** Collect plasma with heparin or EDTA as the anticoagulant. Centrifuge for 20 min at 2000 x g within 30 min of collection. Analyze immediately or aliquot and store frozen at -20°C. **Citrate can not be used as anticoagulant here.**

Note: 1. Coagulate blood samples completely, then, centrifuge, and avoid hemolysis and particles.

2. NaN₃ can not be used as test sample preservative, since it is the inhibitor for HRP.

>> Sample Dilution Guideline

End user should estimate the concentration of the target protein in the test sample first, and select a proper dilution factor to make the diluted target protein concentration falls the optimal detection range of the kit. Dilute the sample with the provided diluent buffer, and several trials may be necessary in practice. The test sample must be well mixed with the diluent buffer

✧ **High target protein concentration (10-100 ng/ml):** Dilution: 1:100. i.e. Add 1 µl of sample into 99 µl of Sample / Standard diluent buffer (Kit Component 3).

✧ **Medium target protein concentration (1-10 ng/ml):** Dilution: 1:10. i.e. Add 10 µl of sample into 90 µl of Sample / Standard diluent buffer (Kit Component 3).

✧ **Low target protein concentration (15.6-1000pg/ml):** Dilution: 1:2. i.e. Add 50 µl of sample into 50 µl of Sample / Standard diluent buffer (Kit Component 3).

✧ **Very low target protein concentration (≤15.6 pg/ml):** Unnecessary to dilute, or dilute at 1:2.

2. Wash buffer

Dilute the concentrated Wash buffer 25-fold (1:25) with distilled water (i.e. add 30ml of concentrated wash buffer into 720ml of distilled water).

3. Standard

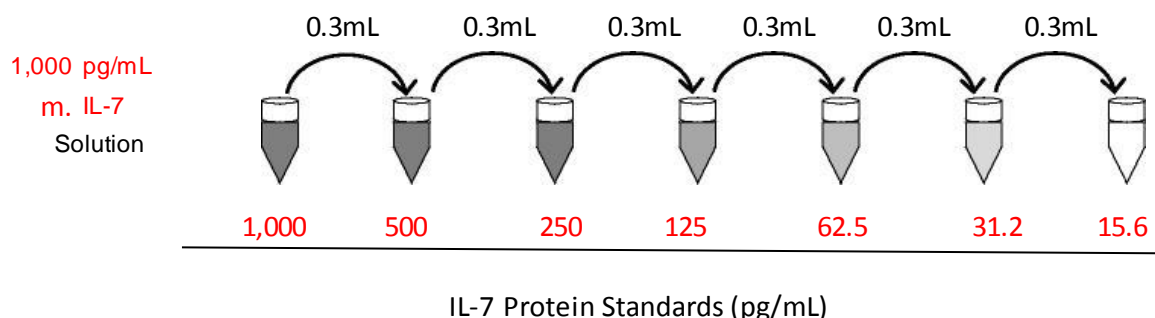
Reconstitution of the Lyophilized Mouse IL-7 standard (Kit Component 2): standard solution should be prepared no more than 2 hours prior to the experiment. Two tubes of standard are included in each kit. Use one tube for each experiment.

(Note: Do not dilute the standard directly in the plate)

a. 10,000 pg/ml of standard solution: Add **1 ml** of Sample / Standard diluent buffer (Kit Component 3) into one Standard (Kit Component 2) tube, keep the tube at room temperature for 10 min and mix thoroughly.

b. 1000pg/ml of standard solution: Add **0.1 ml** of the above 10ng/ml standard solution into **0.9 ml** sample diluent buffer (Kit Component 3) and mix thoroughly.

c. 500 pg/ml → 15.6 pg/ml of standard solutions: Label 6 Eppendorf tubes with 500 pg/ml, 250 pg/ml, 125 pg/ml, 62.5 pg/ml, 31.2 pg/ml, 15.6 pg/ml, respectively. Aliquot **0.3 ml** of the Sample / Standard diluent buffer (Kit Component 3) into each tube. Add **0.3 ml** of the above 1000 pg/ml standard solution into 1st tube and mix thoroughly. Transfer **0.3 ml** from 1st tube to 2nd tube and mix thoroughly. Transfer **0.3 ml** from 2nd tube to 3rd tube and mix thoroughly, and so on.



Note: The standard solutions are best used within 2 hours. The 10,000 pg/ml standard solution should be used within 12 hours. Or store at -20° for up to 48 hours. Avoid repeated freeze-thaw cycles.

4. Preparation of Biotin conjugated anti-mouse IL-7 antibody (Kit Component 4) working solution: prepare no more than 2 hours before the experiment.

a. Calculate the total volume of the working solution: 0.1 ml / well x quantity of wells. (Allow 0.1-0.2 ml more than the total volume)

b. Dilute the Biotin conjugated anti-Mouse IL-7 antibody (Kit Component 4) with Antibody diluent buffer (Kit Component 5) at 1:100 and mix thoroughly. i.e. Add 1 µl of Biotin conjugated anti-Mouse IL-7 antibody into 99 µl of Antibody diluent buffer.

5. Preparation of Avidin-Biotin-Peroxidase Complex (ABC) (Kit Component 6) working solution: prepare no more than 1 hour before the experiment.

- Calculate the total volume of the working solution: 0.1 ml / well x quantity of wells. (Allow 0.1-0.2 ml more than the total volume)
- Dilute the Avidin-Biotin-Peroxidase Complex (ABC) (Kit Component 6) with ABC diluent buffer (Kit Component 7) at 1:100 and mix thoroughly. i.e. Add 1 µl of Avidin-Biotin-Peroxidase Complex (ABC) into 99 µl of ABC diluent buffer.

5 ASSAY PROCEDURE

5.1 General Remarks

Before adding to wells, equilibrate the ABC working solution and TMB substrate (Kit Component 8) for at least 30 minutes at 37°. It is recommended to plot a standard curve for each test.

5.2 Test Procedure

- Set standard, test sample and control (zero) wells on the pre-coated plate respectively, and then, record their positions. It is recommended to measure each standard and sample in duplicate.
- Aliquot 0.1ml of 1000 pg/ml, 500 pg/ml, 250 pg/ml, 125 pg/ml, 62.5 pg/ml, 31.2 pg/ml, 15.6 pg/ml standard solutions into the standard wells.
- Add 0.1 ml of Sample / Standard diluent buffer (Kit Component 3) into the control (zero) well.
- Add 0.1 ml of properly diluted sample (mouse serum, plasma or cell) into test sample wells.
- Seal the plate with a cover and incubate at 37° for 90 min.
- Remove the cover and discard the plate content, clap the plate on the absorbent filter papers or other absorbent material. **Do NOT let the wells completely dry at any time. Do not wash plate!**
- Add 0.1 ml of Biotin conjugated anti-Mouse IL-7 antibody work solution into the above wells (standard, test sample & zero wells). Add the solution at the bottom of each well without touching the side wall.
- Seal the plate with a cover and incubate at 37° for 60 min.
- Remove the cover, and wash plate 3 times with Wash buffer (Kit Component 10) using one of the following methods:
Manual Washing: Discard the solution in the plate without touching the side walls. Clap the plate on absorbent filter papers or other absorbent material. Fill each well completely with Wash buffer (Kit Component 10) and vortex mildly on ELISA shaker for 2 min, then aspirate contents from the plate, and clap the plate on absorbent filter papers or other absorbent material. Repeat this procedure two more times for a **total of THREE washes.**
Automated Washing: Aspirate all wells, then wash plate **THREE times** with Wash buffer (Kit Component 10) (overfilling wells with the buffer). After the final wash, invert plate, and clap the plate on absorbent filter papers or other absorbent material. It is recommended that the washer be set for a soaking time of 1 min or shaking.
- Add 0.1 ml of ABC working solution into each well, cover the plate and incubate at 37° for 30 min.
- Remove the cover and wash plate 5 times with Wash buffer (Kit Component 10), and each time let the wash buffer stay in the wells for 1-2 min. (See Step 9 for plate wash method).
- Add 90 µl of TMB substrate (Kit Component 8) into each well, cover the plate and incubate at 37° in dark for 15-20 min. (**Note:** This incubation time is for reference use only, the optimal time should be determined by end user.) And the shades of blue can be seen in the first 3-4 wells (with most concentrated Mouse IL-7 standard solutions), the other wells show no obvious color.
- Add 0.1 ml of Stop solution (Kit Component 9) into each well and mix thoroughly. The color changes into yellow immediately.
- Read the O.D. absorbance at 450 nm in a microplate reader within 30 min after adding the stop solution.

5.3 Results

For calculation, (the relative O.D.₄₅₀) = (the O.D.₄₅₀ of each well) – (the O.D.₄₅₀ of Zero well). The standard curve can be plotted as the relative O.D.₄₅₀ of each standard solution (Y) vs. the respective concentration of the standard solution (X). The Mouse IL-7 concentration of the samples can be interpolated from the standard curve.

Note: If the samples measured were diluted, multiply the dilution factor to the concentrations from interpolation to obtain the concentration before dilution.

6 QUALITY CONTROL

Good laboratory practice requires that controls be run with each calibration curve. A statistically significant number of controls should be assayed to establish mean values and acceptable ranges to assure proper performance. It is recommended to use controls according to state and federal regulations. The use of controls is advised to assure the day to day validity of results. It is also recommended to make use of national or international Quality Assessment programs in order to ensure the accuracy of the results. Employ appropriate statistical methods for analysing control values and trends. If the results of the assay do not fit to the established acceptable ranges of control materials, results of unknowns should be considered invalid.

In this case, please check the following technical areas: Pipetting and timing devices; photometer, expiration dates of reagents, storage and incubation conditions, aspiration and washing methods. After checking the above mentioned items without finding any error contact your distributor or IBL-America directly.

7 PERFORMANCE CHARACTERISTICS

7.1 Range

15.6pg/ml-1000pg/ml

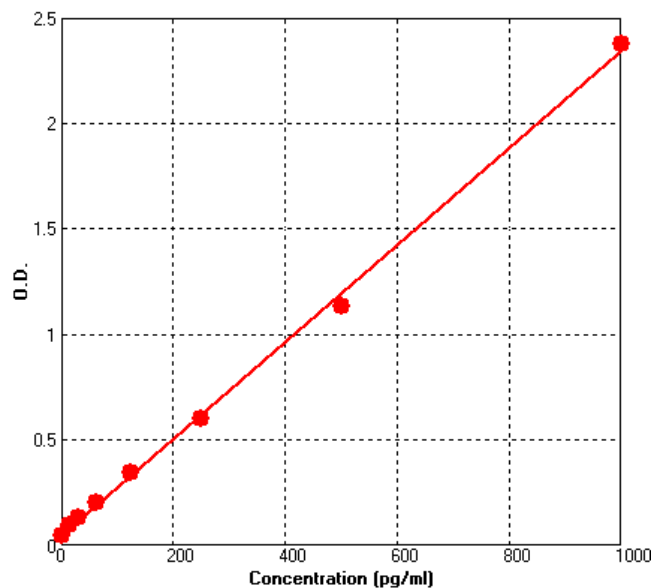
7.2 Sensitivity

<1pg/ml

7.3 Typical Data & Standard Curve

Results of a typical standard run of a Mouse IL-7 ELISA Kit are shown below. **This standard curve was generated at our lab for demonstration purpose only.** Each user should obtain their own standard curve as per experiment. (N/A=not applicable)

X	Pg/ml	0	15.6	31.2	62.5	125	250	500	1000
Y	OD450	0.049	0.095	0.132	0.203	0.344	0.602	1.133	2.379



7.4 References:

1. Heufler C, Topar G, Grasseger A, et al. (September 1993). "Interleukin 7 is produced by murine and human keratinocytes". J. Exp. Med. 178 (3): 1109–14.
2. Kröncke R, Loppnow H, Flad HD, Gerdes J (October 1996). "Human follicular dendritic cells and vascular cells produce interleukin-7: a potential role for interleukin-7 in the germinal center reaction". Eur. J. Immunol. 26 (10): 2541–4.
3. Muegge K, Vila MP, Durum SK (July 1993). "Interleukin-7: a cofactor for V(D)J rearrangement of the T cell receptor beta gene". Science 261 (5117): 93–5.
4. Or R, Abdul-Hai A, Ben-Yehuda A (December 1998). "Reviewing the potential utility of interleukin-7 as a promoter of thymopoiesis and immune recovery". Cytokines Cell. Mol. Ther. 4 (4): 287–94.

8 ORDERING INFORMATION

This kit is manufactured for Immuno-Biological Laboratories, Inc. (IBL-America). For ordering information, please contact:

Immuno-Biological Laboratories, Inc. (IBL-America)

8201 Central Ave NE, Suite P

Minneapolis, MN 55432

Toll Free: (888) 523-1246

Fax: (763) 780-2988

www.ibl-america.com

info@ibl-america.com