



Total Tau Assay Kit

Alzheimer's Disease (AD) Research

Research Use Only

- ✓ Easy to Use
- ✓ Competitive Price

- ✓ High Sensitivity
- ✓ High Specific

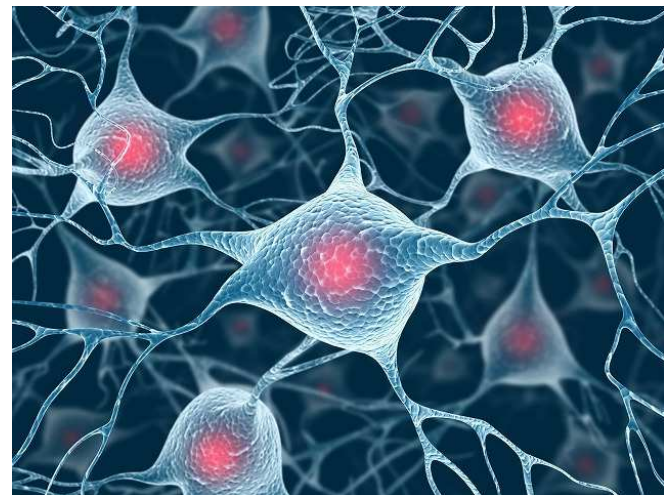
ELISA (96Well)

Product No.	Product Name	Measurement Range	Application Samples
27813	Human Total Tau Assay Kit – IBL	17.2 ~ 1,100 pg/mL	Human CSF

Tau in AD research

Tau protein is a 45-50kDa microtubule-associated protein which consists of 352-441 amino acids.

It has a role of stabilizing microtubules that transport intracellular substances in nerve cells.



It has been known that tauopathy such as Alzheimer type dementia (AD) and frontotemporal lobar degeneration (FTLD) is developed due to abnormal accumulation of Tau.

3 features of AD, senile plaque, neurofibrillary tangle and neuronal cell death have been observed in the brain of AD patients and it has been considered that neurofibrillary tangle is triggered by abnormal accumulation of Tau.

The main element of neurofibrillary tangle is called PHF (paired helical filament) and it is accumulated in nerve cells.

Amyloid β , APP ELISA and Antibody are also available in same design.



Phospho Tau Assay Kit

Alzheimer's Disease (AD) Research

Research Use Only

- ✓ Easy to Use
- ✓ Competitive Price

- ✓ High Sensitivity
- ✓ High Specific

ELISA (96Well)

Product No.	Product Name	Measurement Range	Application Samples
27812	Human Phospho Tau (181P) ELISA – IBL	3.6 ~230 pg/mL	Human CSF

Phospho tau in AD research

Overexpressed phosphorylated tau is aggregated and it becomes a main cause of PHF. It has been thought that GSK-3 β is involved in the process of phosphorylation of tau and A β promotes the activity for phosphorylation of tau.



It has been observed that the concentration of Tau is very high in CSF of patients with neurodegenerative diseases such as Alzheimer's disease as it is released in CSF due to neuron is destroyed while it is rarely detected in CSF of healthy subjects.

Amyloid β , APP ELISA and Antibody are also available in same design.

Distributed by:



Immuno-Biological Laboratories, Inc.
8201 Central Ave NE, Suite P
Minneapolis, MN 55432

Toll-Free: 888-523-1246
Email: info@IBL-America.com
Web: www.IBL-America.com