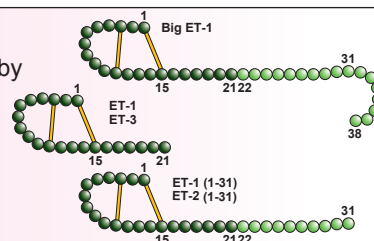


# Endothelins

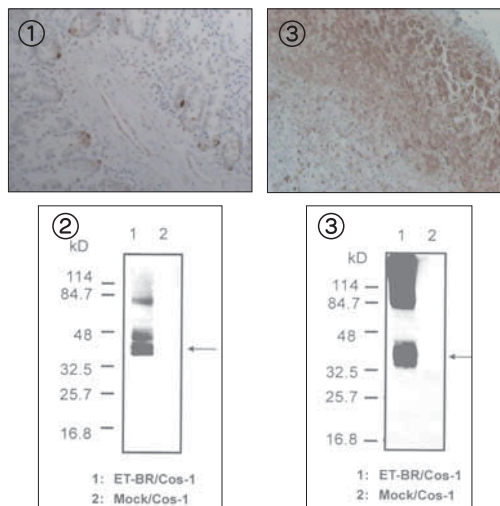
- Endothelins (ET) are isopeptides produced by vascular endothelium that have potent vasoconstriction activity. The peptides are encoded by three separate genes and processed to yield 39-residue "Big ET" molecules which are further processed to the 21 amino acid sequences designated ET-1, ET-2 and ET-3. Endothelins have been linked to atherosclerosis and various cardiovascular disease states.
- IBL's wide range reagents for Endothelins are useful for the research.



Endothelins Product Line up			※ Make to Order      *F/P: for formalin fixed paraffin embedded tissues			
Name	Category	Code	Product Name		Application	Volume
Big Endothelin-1	Kit	27168	Human	Big Endothelin-1 Assay Kit -IBL	0.78-100 pg/mL	96 Well
	Kit	※ 27167	Rat	Big Endothelin-1 Assay Kit -IBL	0.78-100 pg/mL	96 Well
	PoAb	18203	Anti-Human	Big Endothelin-1 (22-38) Rabbit IgG Affinity Purify	IHC (*F/P)	50 ug
	PoAb	18205	Anti-Rat	Big Endothelin-1 (22-38) Rabbit IgG Affinity Purify	IHC (*F/P)	50 ug
Endothelin	PoAb	18204	Anti-	Endothelin (15-21) (C) Rabbit IgG Affinity Purify	IHC (*F/P)	50 ug
Endothelin-1	Kit	27165		Endothelin-1 Assay Kit -IBL	0.78-100 pg/mL	96 Well
	Kit	27177		Endothelin-1 (1-31) Assay Kit -IBL	1.56-200 pg/mL	96 Well
	PoAb	18201	Anti-	Endothelin-1 Rabbit IgG Affinity Purify	IHC (*F/P)	50 ug
Endothelin-2	Kit	※ 17178		Endothelin-2 (1-31) Assay Kit -IBL	3.91-500 pg/mL	96 Well
Endothelin-3	Kit	※ 27169		Endothelin-3 Assay Kit -IBL	0.78-100 pg/mL	96 Well
	PoAb	18202	Anti-	Endothelin-3 Rabbit IgG Affinity Purify	IHC (F/P)	50 ug
Endothelin-A Receptor (ET-AR)	PoAb	16201 ①	Anti-Human	Endothelin-A Receptor (A405) Rabbit IgG Affinity Purify	WB, IHC (*F/P)	100 ug
Endothelin-B Receptor (ET-BR)	PoAb	16205 ②	Anti-Human	Endothelin-B Receptor (B27) Rabbit IgG Affinity Purify	WB	100 ug
	MoAb	10253 ③	Anti-Human	Endothelin-B Receptor (8Z11) Mouse IgG MoAb	WB, IHC (*F/P)	100 ug

## References:

- Okishima N. et al. Specific sandwich-type enzyme immunoassays for smooth muscle constricting novel 31-amino acid endothelins. *Biochem Biophys Res Commun.* 1999; 256 (1), 1-5.
- Tane N. et al. The effects of Endothelin-1 on Flap Necrosis. *Annals of Plastic Surgery.* 1995; 35(4), 389-395.
- Unoki H. et al. Low-density lipoproteins modulate endothelial cells to secrete endothelin-1 in a polarized pattern: a study using a culture model system simulating arterial intima. *Cell and Tissue Research.* 1999; 295 (1), 89-99.
- Hiraki H. et al. Regular immunohistochemical localization of endothelin-1 and endothelin-B receptor in normal, hyperplastic and neoplastic human adrenocortical cells. *Pathology International.* 1997; 47 (2-3), 117-125.
- Muramatsu M. et al. Chronic hypoxia augments endothelin-B receptor-mediated vasodilation in isolated perfused rat lungs. *American Journal of Physiology.* 1999; 276 (2pt1), L358-L364.
- Jun J. Wu et al. Inhibition of in vitro enteric neuronal development by endothelin-3: mediation by endothelin B receptors. *Development.* 1999; 126 (6), 1161-1173.
- Shimada K. et al. Modulation by endothelin-1 of lipopolysaccharide-induced cyclooxygenase 2 expression in mouse peritoneal macrophages. *European Journal of Pharmacology.* 1999; 376 (3), 285-292.
- Uemura H. et al. Immunoreactive Endothelin-1 in the Neural Lobe of the Rat Pituitary Following Hemorrhage and Dehydration. *Endocrine Journal.* 1994; 41 (6), 685-691.
- Yanagisawa H. et al. Altered expression of endothelin-1 and endothelial nitric oxide synthase in the juxtaglomerular apparatus of rats with HgCl<sub>2</sub>-induced acute renal failure. *TOXICOLOGY LETTERS.* 1998; 98 (3), 181-188.



## Manufacturer :

### Immuno-Biological Laboratories Co., Ltd.

5-1 Aramachi, Takasaki-shi, Gunma 370-0831, JAPAN  
 TEL: 027-310-8040  
 FAX: 027-310-8045  
 E-mail: do-ibl@ibl-japan.co.jp  
 URL: <http://www.ibl-japan.co.jp>



## US Distributor:

### IBL-America

8201 Central Ave NE, Suite P  
 Minneapolis, MN 55432  
 Tel: 888-523-1246 Fax: 763-780-2988  
 Email: [sales@ibl-america.com](mailto:sales@ibl-america.com)  
 Web: [www.ibl-america.com](http://www.ibl-america.com)

