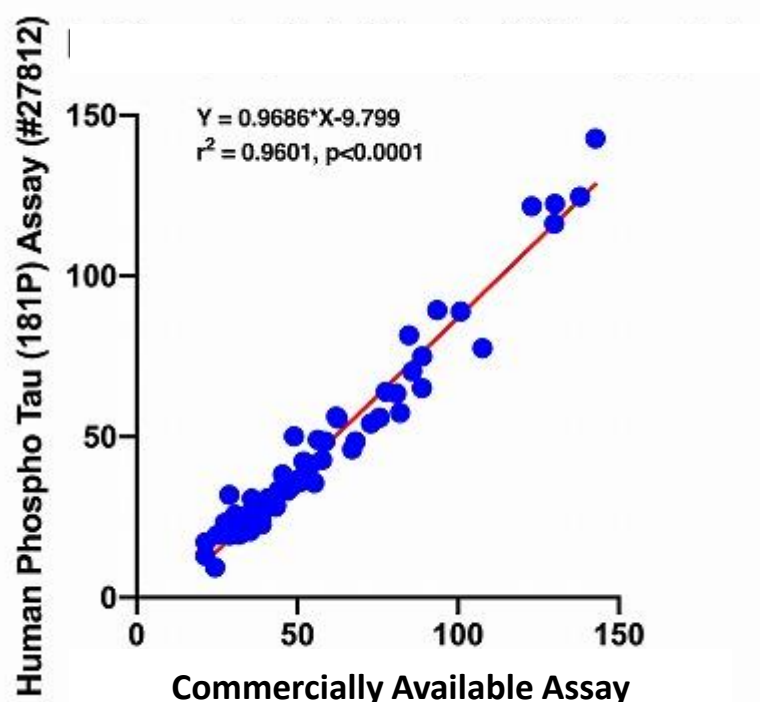


pTau

Intended Use :	Research reagents
Measuring Method :	ELISA
Sample Types :	Human
Measuring Samples :	CSF
Measurement Range :	3.6 - 230 pg/mL
Package Size1 :	96 Well

Measurement value using this ELISA is NOT affected by hemoglobin contamination in CSF samples.

(pg/mL) Correlation Data*



Interfering Substances*

Free bilirubin up to 19.1 mg/dL, Conjugated bilirubin up to 20.7mg/dL, Hemoglobin up to 490mg/dL, Chyl up to 1,650FTU and Ascorbic Acid up to 100mg/dL do not affect on the value of measurement.

Recovery Test Result*

Samples (Serum Dilution Ratio)	Measurement Value (pg/mL)	Theoretical Value (pg/mL)	Recovery Rate (%)
× 2	116	117.16	99.0
× 4	117.1	116.18	100.8
× 8	120.1	115.54	104.0
× 16	115.9	115.29	100.5

The recovery rate was 82.3 - 91.3% when the standard 550pg/mL was added in diluted serum.

*Quoted:

Novel ELISAs to measure total and phosphorylated tau in cerebrospinal fluid. Kawarabayashi T et al. Neurosci Lett. 2020 Feb 8:134826.

pTau

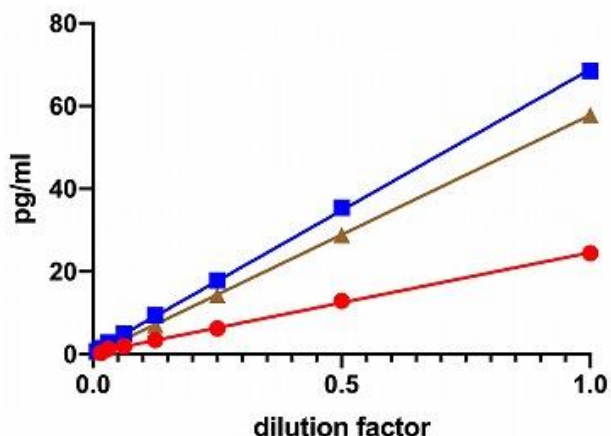
Precision

The measurement value against known concentration is between 80% - 120% when 3 different known concentrated control samples are measured.

Intra-Assay

CV Value is less than 15% in 4 times measurements at same time using 3 different known concentrated control samples.

Dilution Test*



CSF Sample Dilution Test

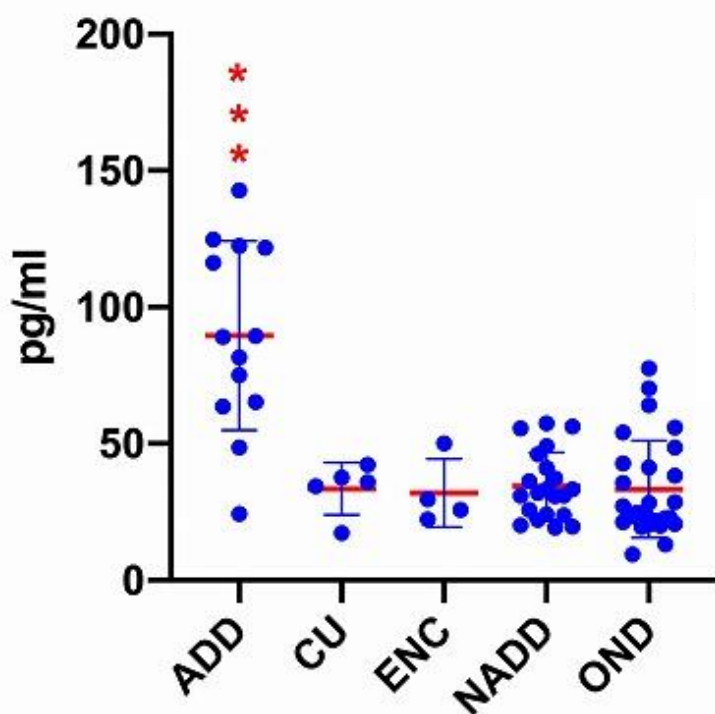
● : Encephalitis, hemolysis +

■ : Encephalitis, hemolysis +

▲ : (Non-Encephalitis, hemolysis -)

NOT affected by hemoglobin contamination in CSF

Measurement Examples (CSF)*



ADD: Alzheimer's Disease (AD) Dementia
CU: Cognitively unimpaired Control Subject
ENC: Encephalitis
NADD: Non-AD Dementia
OND: Other Neurological Diseases

***Quoted:**

Novel ELISAs to measure total and phosphorylated tau in cerebrospinal fluid. Kawarabayashi T et al. Neurosci Lett. 2020 Feb 8:134826.

Distributed by:



Immuno-Biological Laboratories, Inc.
 8201 Central Ave NE, Suite P
 Minneapolis, MN 55432

Toll-Free: 888-523-1246
 Email: info@IBL-America.com
 Web: www.IBL-America.com