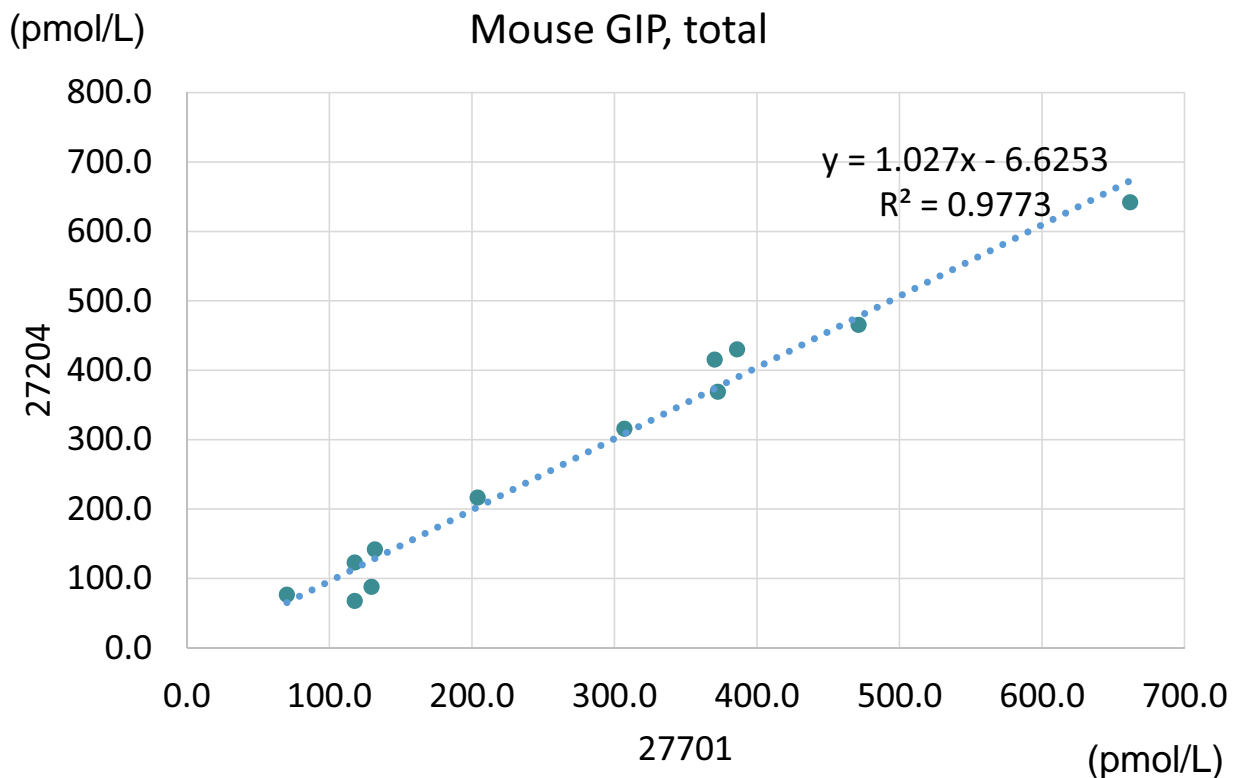


# Comparison data between 27204 and 27701



27204: Mouse GIP, Total Assay Kit - IBL

27701: Mouse GIP, Total  
(High Sensitive) Assay Kit - IBL

<sample>

Mouse EDTA-Plasma N=12

Distributed by:



**Immuno-Biological Laboratories, Inc. (IBL-America)**

8201 Central Ave NE, Suite P, Minneapolis, MN 55432, USA

Call Us : 888-523-1246

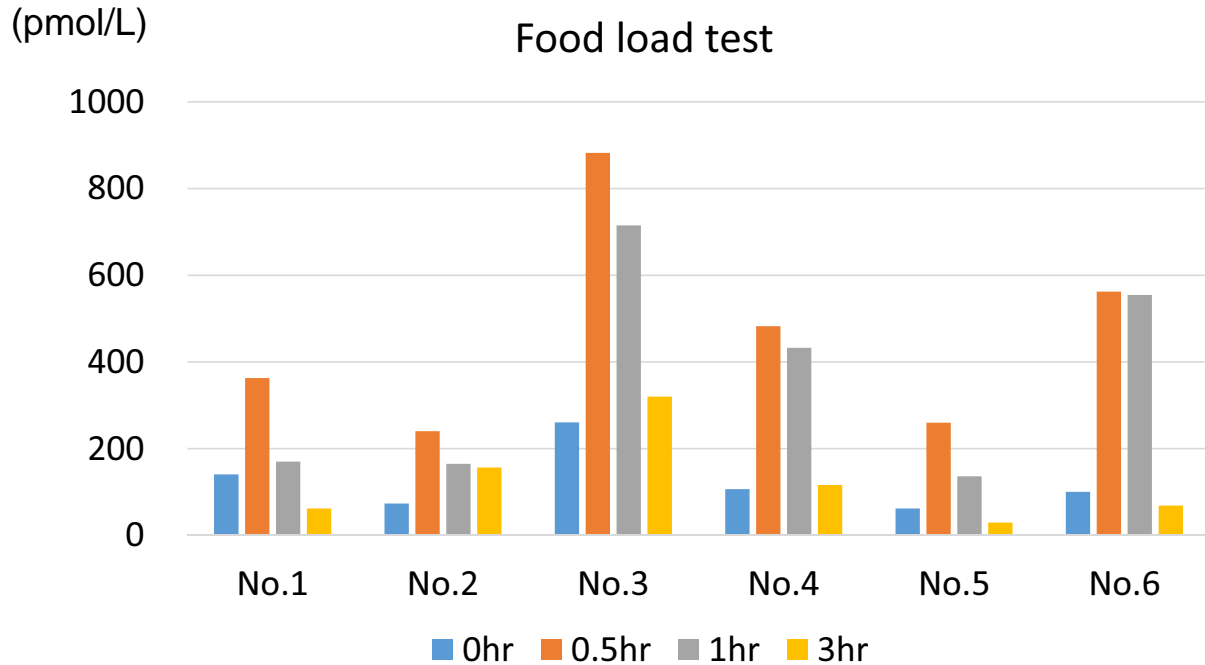
Email: [info@ibl-america.com](mailto:info@ibl-america.com)

URL: [www.ibl-america.com](http://www.ibl-america.com)

# Food Load test

	No.1	No.2	No.3	No.4	No.5	No.6
0hr	140.8	73.4	260.6	106.8	62.0	100.6
0.5hr	362.8	240.3	882.1	482.3	260.1	562.4
1hr	170.2	165.1	715.0	432.7	136.3	554.5
3hr	62.0	156.6	319.9	116.4	29.7	68.8

(pmol/L)



27701: Mouse GIP, Total  
(High Sensitive) Assay Kit - IBL

<specimen>

ICR Mouse EDTA-Plasma  
(sampling from caudal vein)

<protocol>

- +
- Fasting for 16hr
- +
- Sampling (0hr)
- +
- Feeding
- +
- Sampling (0.5hr) and withdraw food
- +
- Sampling (1hr)
- +
- Sampling (3hr)

<sample volume>

10µL for duplicate sample examination  
(20-fold dilution)

Distributed by:



**Immuno-Biological Laboratories, Inc. (IBL-America)**

8201 Central Ave NE, Suite P, Minneapolis, MN 55432, USA

Call Us : 888-523-1246 Email: [info@ibl-america.com](mailto:info@ibl-america.com)

URL: [www.ibl-america.com](http://www.ibl-america.com)