

## APP ELISA Comprehensive Lineup

- [#27731 h\\_sAPP, Total](#)
- [#27734 h\\_sAPP \$\alpha\$  \(h.s.\)](#)
- [#27732 h\\_sAPP \$\beta\$ -w \(h.s.\)](#)
- [#27733 h\\_sAPP \$\beta\$ -sw \(h.s.\)](#)
- [#27736 h\\_APP770](#)
- [#27776 h\\_APP  \$\beta\$ CTF](#)
- [#27419 m/r\\_sAPP \$\alpha\$  \(h.s\)](#)



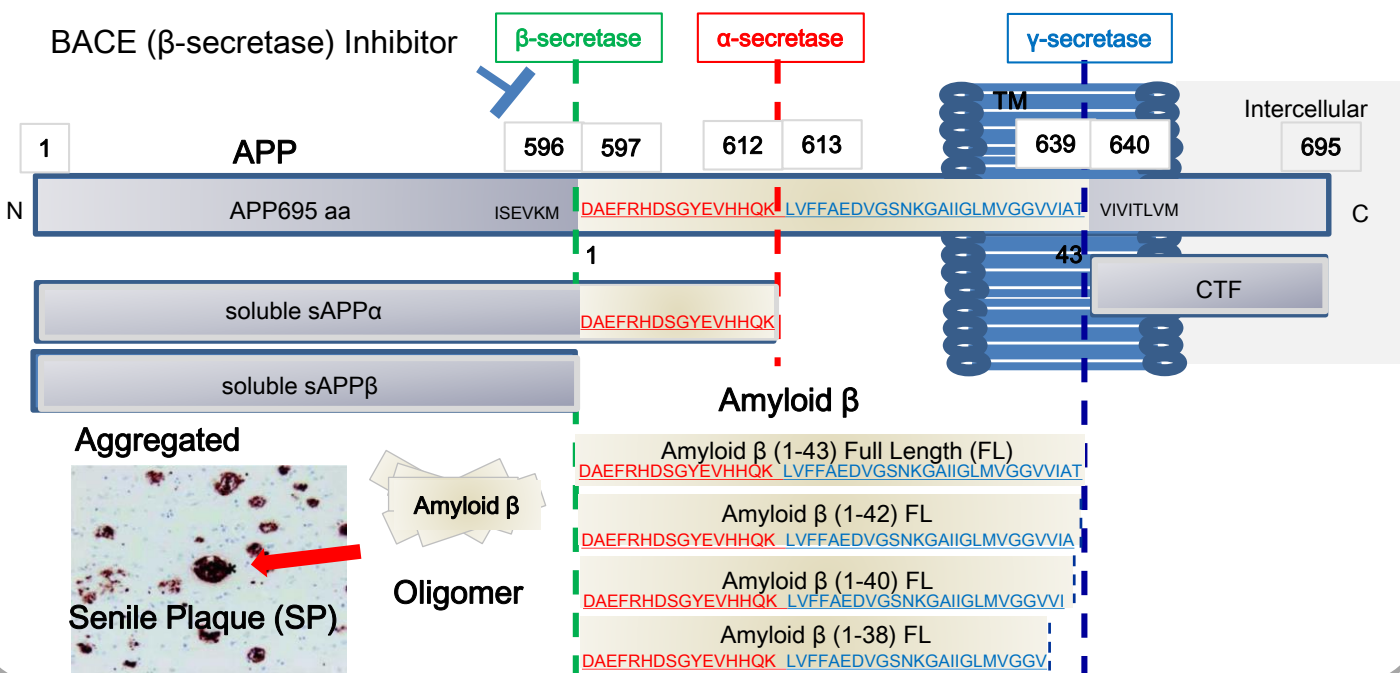
## Amyloid $\beta$ ELISA

- [#27717 h\\_A \$\beta\$  \(1-38\) FL](#)
- [#27718 h\\_A \$\beta\$  \(1-40\) FL](#)
- [#27719 h\\_A \$\beta\$  \(1-42\) FL](#)
- [#27710 h\\_A \$\beta\$  \(1-43\) FL](#)
- [#27713 h\\_A \$\beta\$  \(X-40\)](#)
- [#27711 h\\_A \$\beta\$  \(X-42\)](#)
- [#27729 h\\_A \$\beta\$  \(1-X\)](#)
- [#27418 h\\_A \$\beta\$  \(N3pE-40\)](#)
- [#27716 h\\_A \$\beta\$  \(N3pE-42\)](#)
- [#27709 h\\_A \$\beta\$  Toxic Oligomer](#)
- [#27725 h\\_A \$\beta\$  Oligomer \(82E1 specific\)](#)
- [#27720 m/r\\_A \$\beta\$  \(1-40\) h.s.](#)
- [#27721 m/r\\_A \$\beta\$  \(1-42\)](#)

h: Human m/r: Mouse/Rat FL: Full Length h.s.: High Sensitive

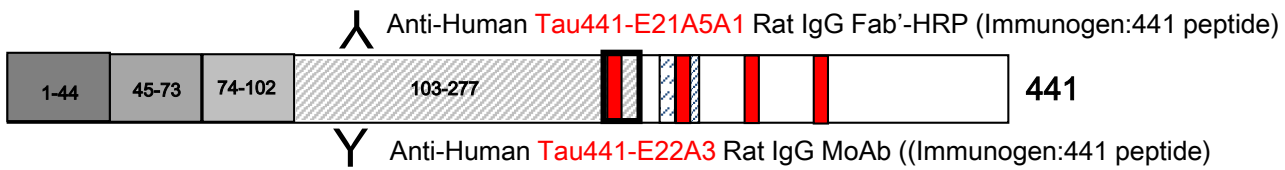
## Process of Producing Amyloid $\beta$

**APP695 aa** – Transmembrane (TM) protein / mainly expressed in neuron cell

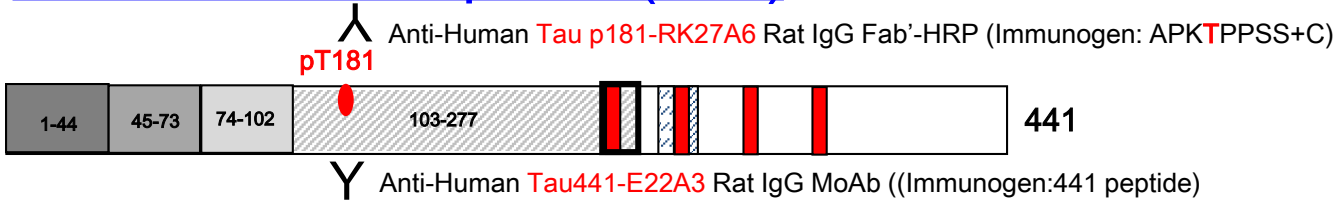


## Tau ELISA

### #27811 Human Total Tau



### #27812 Human Phospho Tau(181P)



## Tau 6 Isoforms

#### No 10237 Tau/Repeat Domain (2B11)

PGGGKVQIVYKP

#### No 10233 Amino Junction 9A1

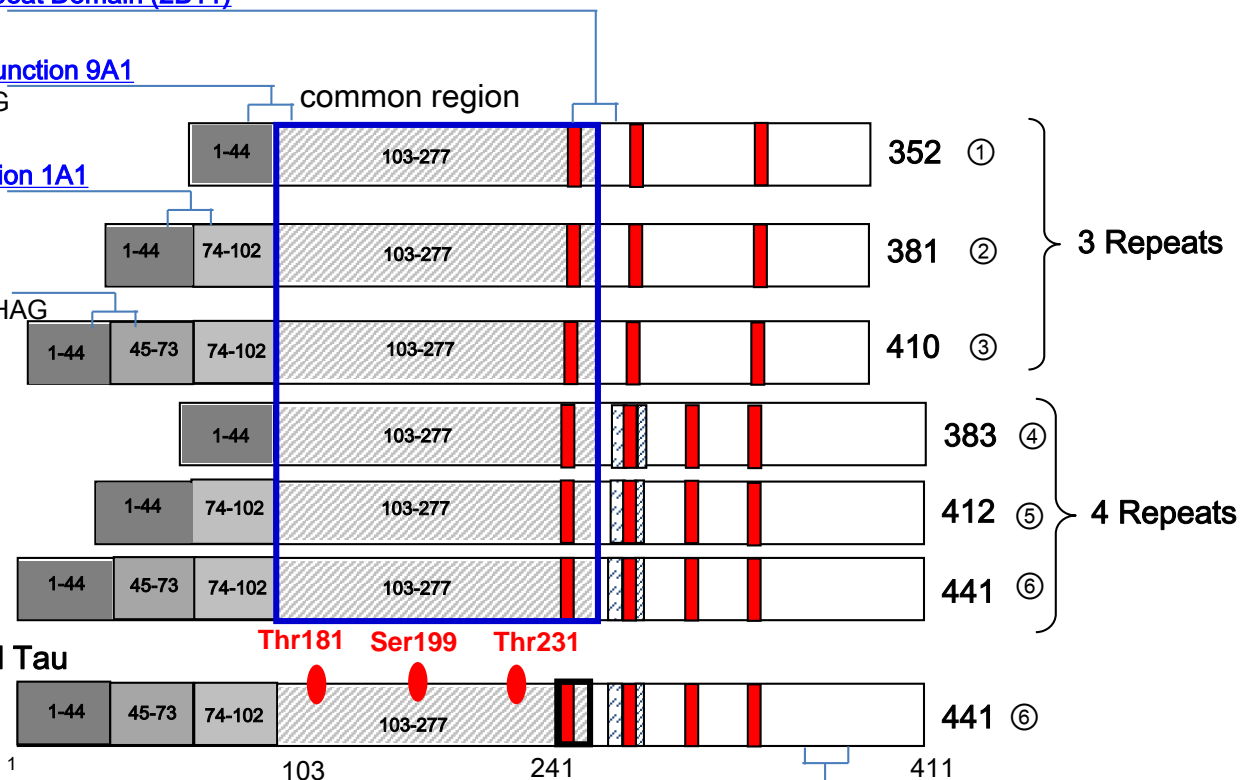
DTDAGLKAEEAGIG

#### No 10235 E2 Junction 1A1

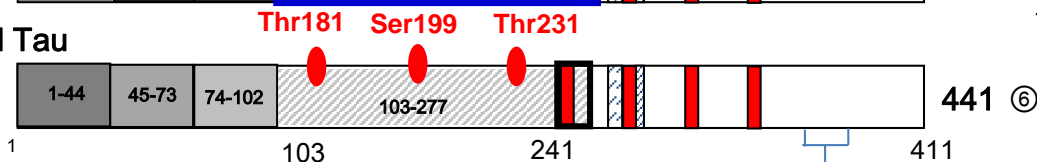
KSTPTAEAGIG

#### No 18721 Tau Ab

AEPRQEFVEMDHAG



#### Phosphorylated Tau



#### No11092 Tau C5

386 TDHGA EIVYKSPVVS GDTSPR 406

Distributed by:



Immuno-Biological Laboratories, Inc.  
8201 Central Ave NE, Suite P  
Minneapolis, MN 55432

Toll-Free: 888-523-1246  
Email: [info@IBL-America.com](mailto:info@IBL-America.com)  
Web: [www.IBL-America.com](http://www.IBL-America.com)