



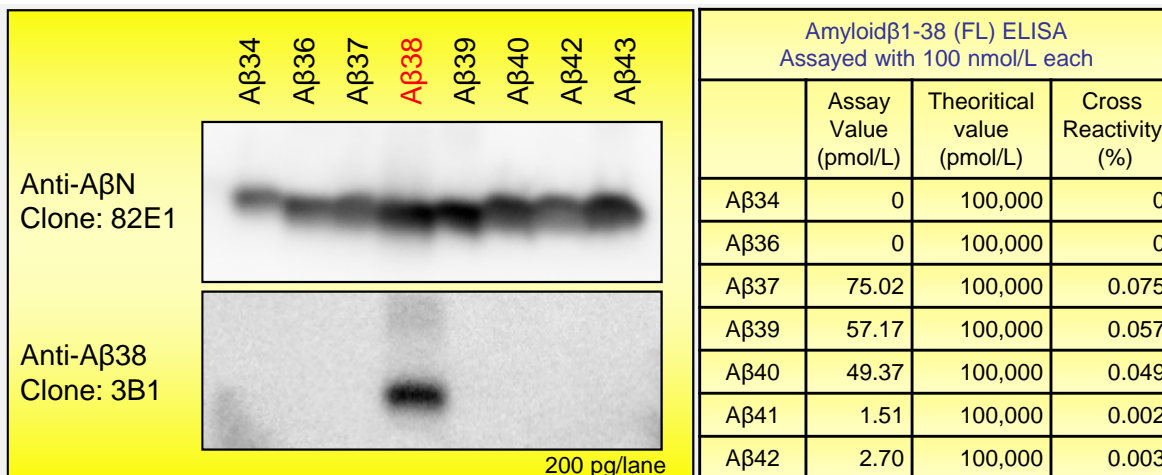
# Amyloid $\beta$ (1-38) (FL) Assay Kit - IBL

Anti-Amyloid $\beta$  38 (Clone: 3B1 Subclass: IgG1)

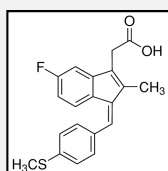
- Research Use Only -

## Assay Kits

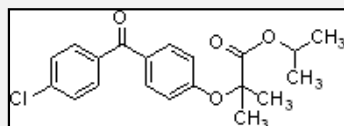
Product No.	Host	Product name	Measurement range	Measuring samples				
				Serum	EDTA-plasma	Urine	CSF	Super-natant
27717	Human	Human Amyloid $\beta$ (1-38) (FL) Assay Kit - IBL	9.38 ~ 600 pg/mL (2.27 ~ 145.23 pmol/L)	/	/	/	○	○



## Effect of Amyloid $\beta$ modulator

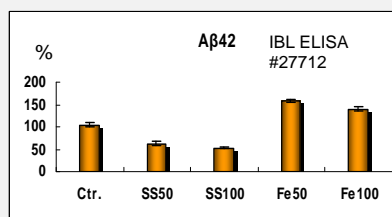
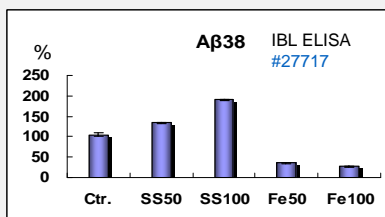
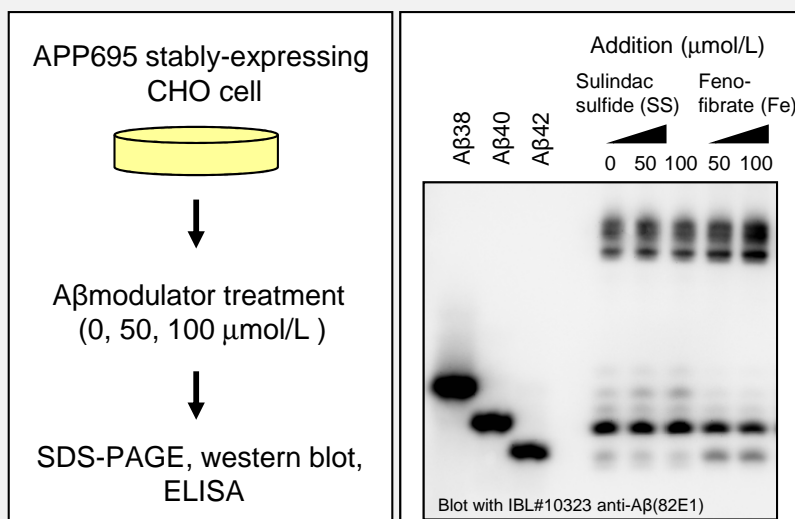


Sulindac sulfide



Fenofibrate

Increase of A $\beta$ 38 and decrease of A $\beta$ 42 are admitted as both densities of Sulindac sulfide (SS) and Fenofibrate (Fe).



Distributed by:



Immuno-Biological Laboratories, Inc.  
8201 Central Ave NE, Suite P  
Minneapolis, MN 55432

Toll-Free: 888-523-1246  
Email: [info@IBL-America.com](mailto:info@IBL-America.com)  
Web: [www.IBL-America.com](http://www.IBL-America.com)