



# Nestin Antibody

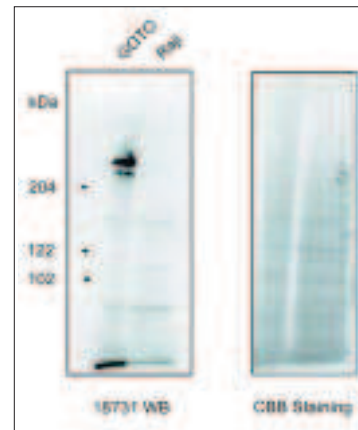
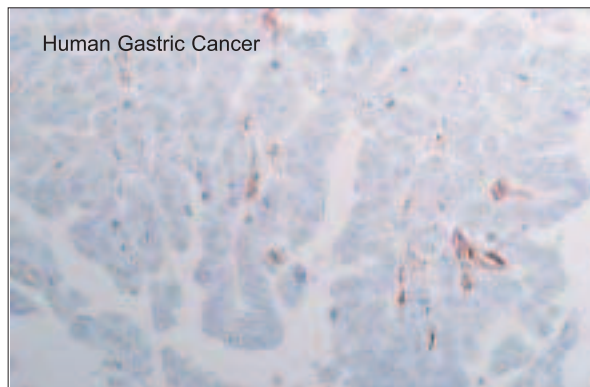
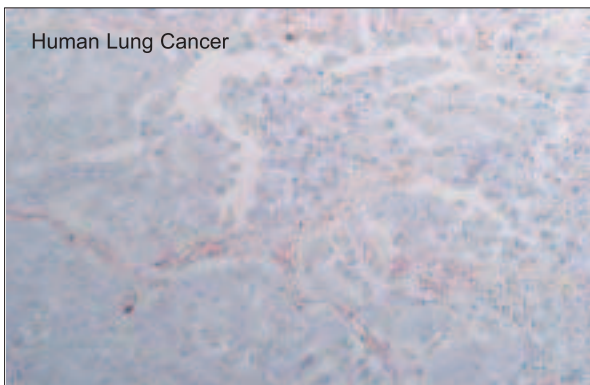
- Research Use Only -

Code No.	Name		Volume	Application to IHC	Application to W/B	
<b>18741</b>	<b>Anti-Human</b>	<b>Nestin (N1602)</b>	Rabbit IgG Affinity Purify	100 ug	○ 5 μ g/ml	○ 1 - 5 μ g/ml

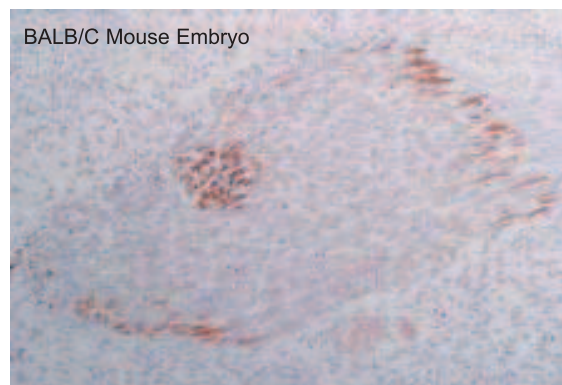
**Nestin is one of the intermediate filaments abundantly produced in the developing central nervous system and sometimes in the embryonic stage. Nestin is also reportedly detected in gliomas/glioblastomas. Thus, the antibody against nestin can be widely used as a marker for proliferating neural progenitor cells in the nervous system. Human nestin protein consists of 856 amino acids, and the molecular weight is about 240 kDa.**

- Can be Applied to Immunohistochemistry
- Not Necessary Any Pre-Treatment
- Useful Marker As a Proliferating Neural Progenitor Cells or Glioma

- Can be Applied to Western Blotting



- Cross Reacts with Mouse (& Rat) tissue



### Reference

Sugawara K, Kurihara H., Negichi M., Saito N., Nakazato Y., Sasaki T., and Takeuchi T. Nestin as a marker for proliferative endothelium in gliomas. *Lab. Invest.* **82** (3), 345-351 (2002)

Distributed by:



Immuno-Biological Laboratories, Inc.  
8201 Central Ave NE, Suite P  
Minneapolis, MN 55432

Toll-Free: 888-523-1246

Email: [info@IBL-America.com](mailto:info@IBL-America.com)

Web: [www.IBL-America.com](http://www.IBL-America.com)