

Product information



GDF-10, 369-478 aa

Human, Recombinant, *E.coli*

Cat. No. IBATGP0336

Full name: Growth differentiation factor 10

NCBI Accession No.: NP_004953

Synonyms: BMP-3b, BMP3B, BIP

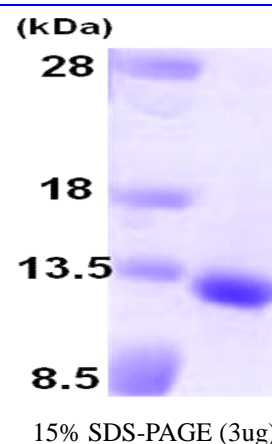
Description: GDF10 (Growth differentiation factor 10) is a member of the bone morphogenetic protein (BMP) family and the TGF-beta superfamily. It is expressed in femur, brain, lung, skeletal, muscle, pancreas and testis, and it plays a role in head formation and may have multiple roles in skeletal morphogenesis. This group of proteins is characterized by a polybasic proteolytic processing site which is cleaved to produce a mature protein containing seven conserved cysteine residues. The members of this family are regulators of cell growth and differentiation in both embryonic and adult tissues. Recombinant GDF10 protein was expressed in *E.coli* and purified by using conventional chromatography techniques.

Form: Liquid. In 10 mM sodium citrate (pH 3.5) containing 10% glycerol.

Molecular Weight: 12.5 kDa (111aa)

Purity: > 95% by SDS - PAGE

Concentration: 1 mg/ml (determined by Bradford assay)



Sequences of amino acids:

MQWDEPRVCS RRYLKVD FAD I GWN EWI I SP KSFDA YYCAG ACEFPMPKIV RPSNHATIQS I VRAVGI I PG IPEPCCVPDK MNSLGVLFLD
ENRNVVLKVY PNMSVDTCAC R

General references:

Cunningham NS., *et al.* (1995) *Growth Factors*. 12(2):99-109.

WARNING: THIS PRODUCT IS NOT INTENDED OR APPROVED FOR HUMAN, DIAGNOSTICS OR VETERINARY USE. USE OF THIS PRODUCT FOR HUMAN OR ANIMAL TESTING IS EXTREMELY HAZARDOUS AND MAY RESULT IN DISEASE, SEVERE INJURY, OR DEATH.

Product information



Ducy P., *et al.* (2000) *Kidney Int.* 57(6):2207-14.

Storage: Can be stored at +4°C short term (1-2 weeks). For long term storage, aliquot and store at -20°C or -70°C.
Avoid repeated freezing and thawing cycles.

WARNING: THIS PRODUCT IS NOT INTENDED OR APPROVED FOR HUMAN, DIAGNOSTICS OR VETERINARY USE. USE OF THIS PRODUCT FOR HUMAN OR ANIMAL TESTING IS EXTREMELY HAZARDOUS AND MAY RESULT IN DISEASE, SEVERE INJURY, OR DEATH.