

Product information



Calumenin, 20-315 aa

Human, His-tagged, Recombinant, *E.coli*

Cat. No. IBATGP0315

Synonyms: CALU

NCBI Accession No.: NP_001210

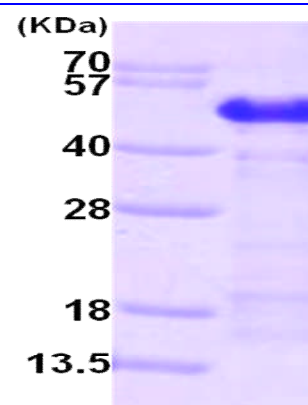
Description: Calumenin, also known as CALU, is a multiple EF-hand calcium-binding protein located in endoplasmic reticulum(ER) and sarcoplasmic reticulum (SR) of mammalian tissues. This protein binds 7 calcium ions with a low affinity and is involved in such ER functions as protein folding and sorting. Recombinant human Calumenin protein, fused to His-tag at N-terminus, was expressed in *E.coli* and purified by using conventional chromatography.

Form: Liquid. In 20 mM Tris-HCl buffer (pH 8.0) containing 10% glycerol.

Molecular Weight: 37.2 kDa (317aa)

Purity: > 90% by SDS - PAGE

Concentration: 1 mg/ml (determined by Bradford assay)



15% SDS-PAGE (3ug)

Sequences of amino acids:

MGSSHHHHH SSGLVPRGSH MKPTEKKDRV HHEPQLSDKV HNDQSFQYD HDAFLGAEAA KTFDQLTPEE SKERLGKIVS KIDGDKDGFV
TVDELKDWIK FAQKRWIYED VERQWKGHDL NEDGLVSWEE YKNATYGYVL DDPDPDDGFN YKQMMVRDER RFKMADKGDG LIATKEEFTA
FLHPEEYDYM KDIVVQETME DIDKNADGFI DLEEYIGDMY SHDGNTEPEE WVKTEREQFV EFRDKNRDGK MDKEETKDWI LPSDYDHAEA
EARHLVYESD QNKDGKLTKE EIVDKYDLFV GSQATDFGEA LVRHDEF

General references:

Yabe D., *et al.* (1997) *J Biol Chem.* 272(29):18232-9.

Vorum H., *et al.* (1998) *Biochim Biophys Acta.* 1386(1):121-31.

WARNING: THIS PRODUCT IS NOT INTENDED OR APPROVED FOR HUMAN, DIAGNOSTICS OR VETERINARY USE. USE OF THIS PRODUCT FOR HUMAN OR ANIMAL TESTING IS EXTREMELY HAZARDOUS AND MAY RESULT IN DISEASE, SEVERE INJURY, OR DEATH.

Product information



Storage: Can be stored at +4°C short term (1-2 weeks). For long term storage, aliquot and store at -20°C or -70°C. Avoid repeated freezing and thawing cycles.

WARNING: THIS PRODUCT IS NOT INTENDED OR APPROVED FOR HUMAN, DIAGNOSTICS OR VETERINARY USE. USE OF THIS PRODUCT FOR HUMAN OR ANIMAL TESTING IS EXTREMELY HAZARDOUS AND MAY RESULT IN DISEASE, SEVERE INJURY, OR DEATH.