

Product information



CBR1, 1-277 aa

Human, Recombinant, *E.coli*

Cat. No. IBATGP0311

Full name: Carbonyl reductase 1

NCBI Accession No.: NP_001748

Synonyms: CBR, hCBR1, SDR21C1

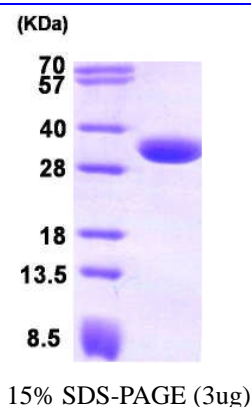
Description: CBR1(Carbonyl reductase 1) is one of several monomeric NADPH-dependent oxidoreductases having wide specificity for carbonyl compounds. CBR1 is widely distributed in human tissues. CBR1 metabolizes many toxic environmental quinones and pharmacological relevant substrates such as the anticancer doxorubicin. CBR1 can also convert prostaglandin E2 to prostaglandin F2-alpha. Recombinant human CBR1 protein was expressed in *E.coli* and purified by using conventional chromatography.

Form: Liquid. In 20 mM Tris-HCl buffer (pH 8.5) containing 10% glycerol

Molecular Weight: 30 kDa (277aa)

Purity: > 95% by SDS - PAGE

Concentration: 1 mg/ml (determined by Bradford assay)



Sequences of amino acids:

MSSGIHVALV TGGNKGIGLA IVRDLCRLFS GDVLTARDV TRGQAAVQQL QAEGLSPRFH QLDIDDLQSI RALRDFLRKE YGGLDVLVNN
AGIAFKVADP TPFHIQAEVT MKTNFFGTRD VCTELLPLIK PQGRVVNVSS IMSVRALKSC SPELQQKFRS ETITEEELVG LMNKFVEDTK
KGVHQKEGWP SSAYGVTKIG VTLVSRIHAR KLSEQRKGDK ILLNACCPGW VRTDMAGPKA TKSPEEGAET PVYLALLPPD AEGPHGQFVS
EKRVEQW

General references:

Bateman RL., *et al.* (2008), *J Biol Chem.* **283**(51):35756-62.

WARNING: THIS PRODUCT IS NOT INTENDED OR APPROVED FOR HUMAN, DIAGNOSTICS OR VETERINARY USE. USE OF THIS PRODUCT FOR HUMAN OR ANIMAL TESTING IS EXTREMELY HAZARDOUS AND MAY RESULT IN DISEASE, SEVERE INJURY, OR DEATH.

Product information



Plebuch M., *et al.* (2007). *Cancer Lett.* **255**(1):49-56.

Storage: Can be stored at +4°C short term (1-2 weeks). For long term storage, aliquot and store at -20°C or -70°C. Avoid repeated freezing and thawing cycles.

WARNING: THIS PRODUCT IS NOT INTENDED OR APPROVED FOR HUMAN, DIAGNOSTICS OR VETERINARY USE. USE OF THIS PRODUCT FOR HUMAN OR ANIMAL TESTING IS EXTREMELY HAZARDOUS AND MAY RESULT IN DISEASE, SEVERE INJURY, OR DEATH.