

# Product information



## CXCL2, 35-107 aa

Human, His-tagged, Recombinant, *E.coli*

Cat. No. IBATGP0299

**Full name:** C-X-C motif chemokines 2

**NCBI Accession No.:** NP\_002080

**Synonyms:** MIP2-alpha, Gro-beta, CINC-2a, GRO2, GROb, MIP2, MIP2A, SCYB2

**Description:** CXCL2 is a small cytokine belonging to the CXC chemokine family that is also known as Chemokine (C-X-C motif) ligand 2, and macrophage inflammatory protein 2-alpha (MIP2-alpha). CXCL2 is secreted by activated monocytes, neutrophils and macrophages and expressed at sites of inflammation. CXCL2 is chemotactic for polymorphonuclear leukocytes and hematopoietic stem cells and suppresses hematopoietic progenitor cell proliferation. Recombinant human CXCL2 protein, fused to His-tag at N-terminus, was expressed in *E.coli* and purified by using conventional chromatography.

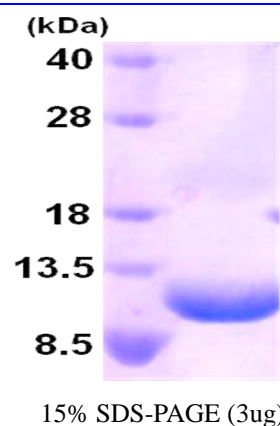
**Form:** Liquid. In 20 mM Tris-HCl buffer (pH 8.0)

**Molecular Weight:** 10.1 kDa (94aa)

**Purity:** > 95% by SDS - PAGE

**Concentration:** 1 mg/ml (determined by Bradford assay)

**Endotoxin Level:** < 1.0 EU per 1 µg of protein (determined by LAL method)



### Sequences of amino acids:

MGSSHHHHHH SSGLVPRGSH MAPLATELRC QCLQLQGIIH LKNIQSVKVK SPGPHCAQTE VIATLKNGQK ACLNPASPMV KKIIEKMLKN GKSN

### General references:

Wolpe SD., *et al.* (1989). *Proc Natl Acad Sci U S A.* **86**(2):612-6.

Jerva LF., *et al.* (1997). *Protein Sci.* **6**(8):1643-52.

Pelus LM., *et al.* (2006). *Exp Hematol.* **34**(8):1010-20.

**WARNING: THIS PRODUCT IS NOT INTENDED OR APPROVED FOR HUMAN, DIAGNOSTICS OR VETERINARY USE. USE OF THIS PRODUCT FOR HUMAN OR ANIMAL TESTING IS EXTREMELY HAZARDOUS AND MAY RESULT IN DISEASE, SEVERE INJURY, OR DEATH.**

# Product information

---



**Storage:** Can be stored at +4°C short term (1-2 weeks). For long term storage, aliquot and store at -20°C or -70°C. Avoid repeated freezing and thawing cycles.

**WARNING: THIS PRODUCT IS NOT INTENDED OR APPROVED FOR HUMAN, DIAGNOSTICS OR VETERINARY USE. USE OF THIS PRODUCT FOR HUMAN OR ANIMAL TESTING IS EXTREMELY HAZARDOUS AND MAY RESULT IN DISEASE, SEVERE INJURY, OR DEATH.**