

*PRODUCT  
INFORMATION*



***Human sCD8  
ELISA***

***IB49626  
and  
IB49626-10***

Enzyme-linked immunosorbent assay for  
detection of human sCD8.

For research use only - not for use in diagnostic procedures.

**Human sCD8  
IB49626  
IB49626-10**

## TABLE OF CONTENTS

1	Intended Use	3
2	Summary	3
3	Principles of the Test	4
4	Reagents Provided	6
5	Storage Instructions – ELISA Kit	8
6	Specimen Collection and Storage Instructions	8
7	Materials Required But Not Provided	9
8	Precautions for Use	10
9	Preparation of Reagents	12
10	Test Protocol	17
11	Calculation of Results	22
12	Limitations	25
13	Performance Characteristics	26
14	Bibliography	31
15	Ordering Information	32
16	Reagent Preparation Summary	34
17	Test Protocol Summary	35

## 1 Intended Use

The human sCD8 ELISA is an enzyme-linked immunosorbent assay for the detection of human sCD8. **The human sCD8 ELISA is for research use only. Not for use in diagnostic procedures.**

## 2 Summary

CD8 is a cell surface antigen that belongs to the immunoglobulin superfamily (1). It occurs either as a disulfide-linked homodimer or homomultimer of 32kDA subunits or as a heterodimer complexed with CD8 $\beta$  (2).

Human T lymphocytes are classified as helper-inducer (CD4) and suppressor-cytotoxic (CD8) according to the cell surface phenotypes (3).

CD8 is crucial to the positive selection of cytotoxic T cells in the thymus (4). It binds to class I MHC molecules and by this acts as a coreceptor and stabilizes the interaction of the T-cell antigen receptor with major histocompatibility complex (5).

An soluble form of CD8 has been described that seems to result from alternative mRNA splicing (6, 7).

Serum levels of sCD8 have e.g. been found to be of importance in patients with the following diseases: leukemia (8), allograft transplantation (9, 10), as a marker for T-cell activation in HIV (11, 12, 13, 14), Graves' and Hashimoto's diseases (15), Multiple Sclerosis (16), depression (17), diabetes (18), and infectious mononucleosis (19).

### 3 Principles of the Test

An anti-human sCD8 coating antibody is adsorbed onto microwells.

Human sCD8 present in the sample or standard binds to antibodies adsorbed to the microwells.

Following incubation unbound biological components are removed during a wash step. A polyclonal anti-human sCD8 detection antibody (rabbit) is added and binds to human sCD8 captured by the first antibody.

Following incubation unbound detection antibody is removed during a wash step. Anti-rabbit-IgG-HRP is added and binds to the detection antibody.

Figure 1

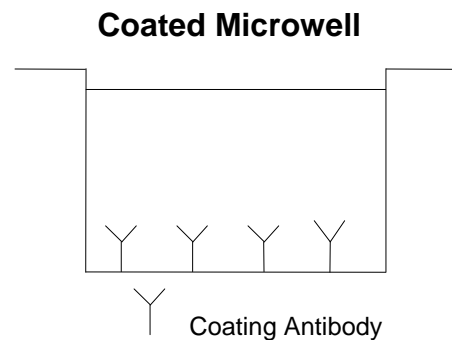


Figure 2

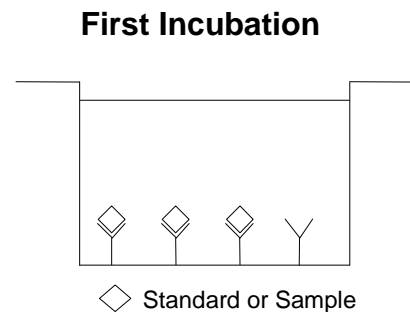


Figure 3

**Second Incubation**

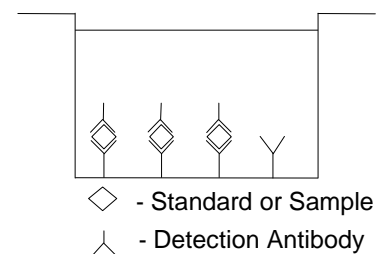
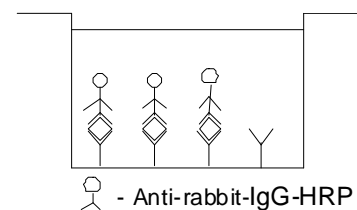


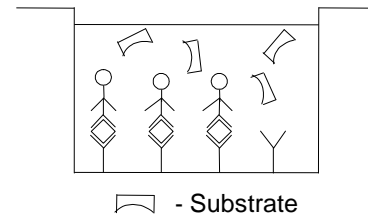
Figure 4

**Third Incubation**



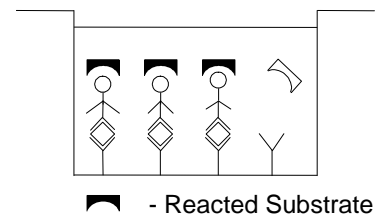
Following incubation unbound anti-rabbit-IgG-HRP is removed during a wash step, and substrate solution reactive with HRP is added to the wells.

Figure 5

**Fourth Incubation**

A coloured product is formed in proportion to the amount of human sCD8 present in the sample or standard. The reaction is terminated by addition of acid and absorbance is measured at 450 nm. A standard curve is prepared from 7 human sCD8 standard dilutions and human sCD8 concentration determined.

Figure 6



## 4 Reagents Provided

### 4.1 Reagents for human sCD8 ELISA IB49626 (96 tests)

- 1 aluminium pouch with a **Microwell Plate coated** with monoclonal antibody to human sCD8
- 1 vial (150 µl) anti-human sCD8 polyclonal **Detection Antibody** (rabbit)
- 1 vial (15 µl) **Anti-Rabbit-IgG-HRP**
- 2 vials human sCD8 **Standard**, 4000 U/ml upon dilution
- 1 vial (5 ml) **Assay Buffer Concentrate** 20x (PBS with 1% Tween 20 and 10% BSA)
- 1 bottle (50 ml) **Wash Buffer Concentrate** 20x (PBS with 1% Tween 20)
- 1 vial (15 ml) **Substrate Solution** (tetramethyl-benzidine)
- 1 vial (12 ml) **Stop Solution** (1M Phosphoric acid)
- 1 vial (0.4 ml) **Blue-Dye**
- 1 vial (0.4 ml) **Green-Dye**
- 1 vial (0.4 ml) **Red-Dye**
- 6 **Adhesive Films**

## 4.2 Reagents for human sCD8 ELISA IB49626-10 (10x96 tests)

- 10 aluminium pouches with a **Microwell Plate coated** with monoclonal antibody to human sCD8
- 10 vials (150 µl) anti-human sCD8 polyclonal **Detection Antibody** (rabbit)
- 10 vials (15 µl) **Anti-Rabbit-IgG-HRP**
- 10 vials human sCD8 **Standard**, 4000 U/ml upon dilution
- 3 vials (5 ml) **Assay Buffer Concentrate** 20x (PBS with 1% Tween 20 and 10% BSA)
- 5 bottles (50 ml) **Wash Buffer Concentrate** 20x (PBS with 1% Tween 20)
- 10 vials (15 ml) **Substrate Solution** (tetramethyl-benzidine)
- 10 vials (12 ml) **Stop Solution** (1M Phosphoric acid)
- 6 vials (0.4 ml) **Blue-Dye**
- 6 vials (0.4 ml) **Green-Dye**
- 6 vials (0.4 ml) **Red-Dye**
- 30 **Adhesive Films**

## **5 Storage Instructions – ELISA Kit**

Store coated microwell plate, standard and Detection Antibody or whole kit at -20°C. The coated microwell plate, standard and Detection Antibody can also be removed and stored at -20°C, while remaining kit reagents are stored between 2° and 8°C. Immediately after use remaining reagents should be returned to cold storage (coated microwell plate, standard and Detection Antibody at -20°C, remaining kit reagents at 2° to 8°C). Expiry of the kit and reagents is stated on labels.

Expiry of the kit components can only be guaranteed if the components are stored properly, and if, in case of repeated use of one component, this reagent is not contaminated by the first handling.

## **6 Specimen Collection and Storage Instructions**

Serum and plasma (citrate) were tested with this assay. Other biological samples might be suitable for use in the assay.

Remove serum or plasma from the clot or cells as soon as possible after clotting and separation.

Samples containing a visible precipitate must be clarified prior to use in the assay. Do not use grossly hemolyzed or lipemic specimens.

Samples should be aliquoted and must be stored frozen at -20°C to avoid loss of bioactive human sCD8. If samples are to be run within 24 hours, they may be stored at 2° to 8°C (for sample stability refer to 13.5).

Avoid repeated freeze-thaw cycles. Prior to assay, the frozen sample should be brought to room temperature slowly and mixed gently.

## **7 Materials Required But Not Provided**

- 5 ml and 10 ml graduated pipettes
- 5  $\mu$ l to 1000  $\mu$ l adjustable single channel micropipettes with disposable tips
- 50  $\mu$ l to 300  $\mu$ l adjustable multichannel micropipette with disposable tips
- Multichannel micropipette reservoir
- Beakers, flasks, cylinders necessary for preparation of reagents
- Device for delivery of wash solution (multichannel wash bottle or automatic wash system)
- Microwell strip reader capable of reading at 450 nm (620 nm as optional reference wave length)
- Glass-distilled or deionized water
- Statistical calculator with program to perform regression analysis

## 8 Precautions for Use

- All chemicals should be considered as potentially hazardous. We therefore recommend that this product is handled only by those persons who have been trained in laboratory techniques and that it is used in accordance with the principles of good laboratory practice. Wear suitable protective clothing such as laboratory overalls, safety glasses and gloves. Care should be taken to avoid contact with skin or eyes. In the case of contact with skin or eyes wash immediately with water. See material safety data sheet(s) and/or safety statement(s) for specific advice.
- Reagents are intended for research use only and are not for use in diagnostic or therapeutic procedures.
- Do not mix or substitute reagents with those from other lots or other sources.
- Do not use kit reagents beyond expiration date on label.
- Do not expose kit reagents to strong light during storage or incubation.
- Do not pipette by mouth.
- Do not eat or smoke in areas where kit reagents or samples are handled.
- Avoid contact of skin or mucous membranes with kit reagents or specimens.
- Rubber or disposable latex gloves should be worn while handling kit reagents or specimens.
- Avoid contact of substrate solution with oxidizing agents and metal.
- Avoid splashing or generation of aerosols.
- In order to avoid microbial contamination or cross-contamination of reagents or specimens which may invalidate the test use disposable pipette tips and/or pipettes.
- Use clean, dedicated reagent trays for dispensing the conjugate and substrate reagent.

- Exposure to acid inactivates the conjugate.
- Glass-distilled water or deionized water must be used for reagent preparation.
- Substrate solution must be at room temperature prior to use.
- Decontaminate and dispose specimens and all potentially contaminated materials as they could contain infectious agents. The preferred method of decontamination is autoclaving for a minimum of 1 hour at 121.5°C.
- Liquid wastes not containing acid and neutralized waste may be mixed with sodium hypochlorite in volumes such that the final mixture contains 1.0% sodium hypochlorite. Allow 30 minutes for effective decontamination. Liquid waste containing acid must be neutralized prior to the addition of sodium hypochlorite.

## 9 Preparation of Reagents

**Buffer Concentrates** should be brought to room temperature and should be diluted before starting the test procedure.

If crystals have formed in the **Buffer Concentrates**, warm them gently until they have completely dissolved.

### 9.1 Wash Buffer (1x)

Pour entire contents (50 ml) of the **Wash Buffer Concentrate** (20x) into a clean 1000 ml graduated cylinder. Bring to final volume of 1000 ml with glass-distilled or deionized water. Mix gently to avoid foaming. The pH of the final solution should adjust to 7.4.

Transfer to a clean wash bottle and store at 2° to 25°C. Please note that Wash Buffer (1x) is stable for 30 days.

Wash Buffer (1x) may also be prepared as needed according to the following table:

Number of Strips	Wash Buffer Concentrate (20x) (ml)	Distilled Water (ml)
1 - 6	25	475
1 - 12	50	950

### 9.2 Assay Buffer (1x)

Pour the entire contents (5 ml) of the **Assay Buffer Concentrate** (20x) into a clean 100 ml graduated cylinder. Bring to final volume of 100 ml with distilled water. Mix gently to avoid foaming.

Store at 2° to 8°C. Please note that the Assay Buffer (1x) is stable for 30 days.

Assay Buffer (1x) may also be prepared as needed according to the following table:

Number of Strips	Assay Buffer Concentrate (20x) (ml)	Distilled Water (ml)
1 - 6	2.5	47.5
1 - 12	5.0	95.0

### 9.3 Detection Antibody

**Please note that the Detection Antibody should be used within 30 minutes after dilution.**

Make a 1:100 dilution of the concentrated **Detection Antibody** solution with Assay Buffer (1x) in a clean plastic tube as needed according to the following table:

Number of Strips	Detection Antibody (ml)	Assay Buffer (1x) (ml)
1 - 6	0.06	5.94
1 - 12	0.12	11.88

### 9.4 Anti-Rabbit-IgG-HRP

**Please note that the anti-rabbit-IgG-HRP should be used within 30 minutes after dilution.**

Dilute the anti-rabbit-**IgG-HRP** 1:10 just prior to use by adding 135  $\mu$ l Assay Buffer (1x) to the tube containing the anti-rabbit-IgG-HRP concentrate. Mix the contents of the tube well.

Make a further 1:100 dilution with Assay Buffer (1x) in a clean plastic tube as needed according to the following table:

Number of Strips	Prediluted (1:10) anti-rabbit-IgG-Conjugate (ml)	Assay Buffer (1x) (ml)
1 - 6	0.06	5.94
1 - 12	0.12	11.88

## 9.5 Human sCD8 Standard

Prepare **human sCD8 standard** by addition of Assay Buffer (1x) as stated on the label and mix gently (concentration of standard = 4000 U/ml).

**Standard dilutions** can be prepared directly on the microwell plate (see 10.c) or alternatively in tubes (see 9.5.1).

### 9.5.1 External Standard Dilution

Label 7 tubes, one for each standard point.

S1, S2, S3, S4, S5, S6, S7

Then prepare 1:2 serial dilutions for the standard curve as follows:  
Pipette 225 µl of Assay Buffer (1x) into each tube.

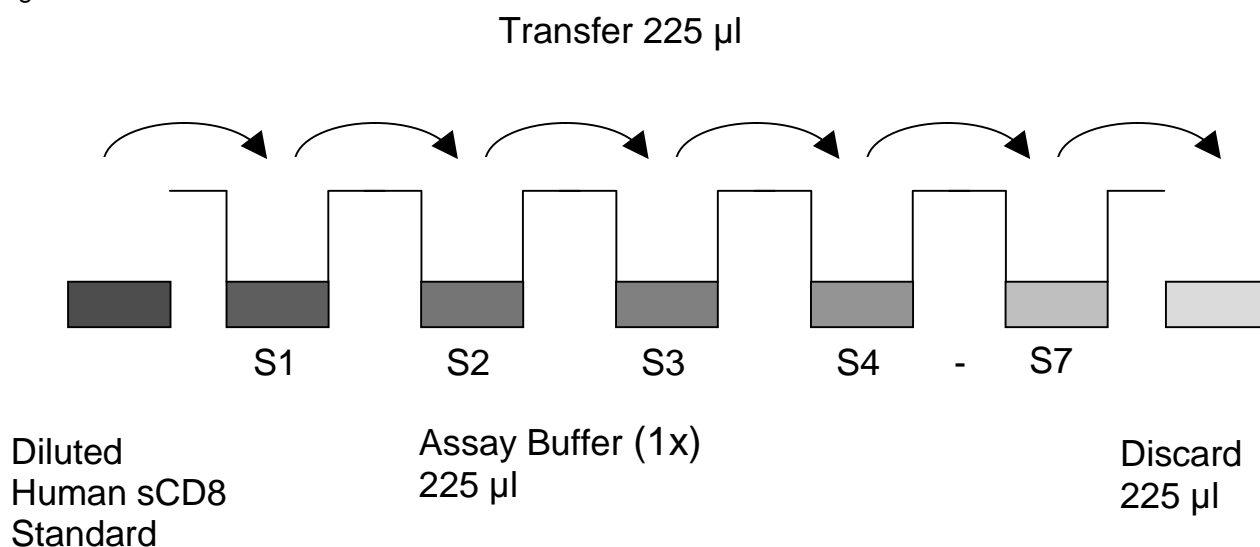
Pipette 225 µl of diluted standard (concentration = 4000 U/ml) into the first tube, labelled S1, and mix (concentration of standard 1 = 2000 U/ml).

Pipette 225 µl of this dilution into the second tube, labelled S2, and mix thoroughly before the next transfer.

Repeat serial dilutions 5 more times thus creating the points of the standard curve (see Figure 7).

Assay Buffer (1x) serves as blank.

Figure 7



## 9.6 Addition of Colour-giving Reagents: Blue-Dye, Green-Dye, Red-Dye

In order to help our customers to avoid any mistakes in pipetting the IBL-America ELISAs, IBL-America offers a tool that helps to monitor the addition of even very small volumes of a solution to the reaction well by giving distinctive colours to each step of the ELISA procedure.

**This procedure is optional**, does not in any way interfere with the test results, and is designed to help the customer with the performance of the test, but can also be omitted, just following the instruction booklet.

Alternatively, the dye solutions from the stocks provided (**Blue-Dye, Green-Dye, Red-Dye**) can be added to the reagents according to the following guidelines:

1. **Diluent:** Before standard and sample dilution add the **Blue-Dye** at a dilution of 1:250 (see table below) to the appropriate diluent (1x) according to the test protocol. After addition of **Blue-Dye**, proceed according to the instruction booklet.

5 ml Assay Buffer (1x)	20 $\mu$ l <b>Blue-Dye</b>
12 ml Assay Buffer (1x)	48 $\mu$ l <b>Blue-Dye</b>
50 ml Assay Buffer (1x)	200 $\mu$ l <b>Blue-Dye</b>

**2. Detection Antibody:** Before dilution of the concentrated detection antibody, add the **Green-Dye** at a dilution of 1:100 (see table below) to the Assay Buffer (1x) used for the final antibody dilution. Proceed after addition of **Green-Dye** according to the instruction booklet: Preparation of Detection Antibody.

6 ml Assay Buffer (1x)	60 $\mu$ l <b>Green-Dye</b>
12 ml Assay Buffer (1x)	120 $\mu$ l <b>Green-Dye</b>

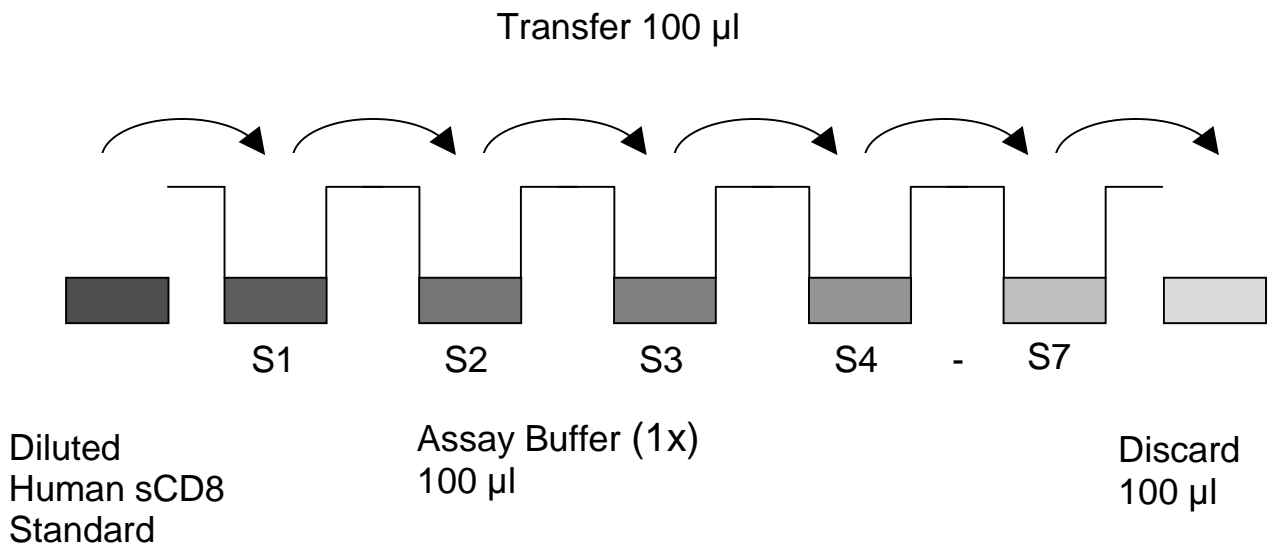
**3. Anti-Rabbit-IgG-HRP:** Before dilution of the concentrated anti-rabbit-IgG-HRP, add the **Red-Dye** at a dilution of 1:250 (see table below) to the Assay Buffer (1x) used for the final anti-rabbit-IgG-HRP dilution. Proceed after addition of **Red-Dye** according to the instruction booklet: Preparation of anti-rabbit-IgG-HRP.

6 ml Assay Buffer (1x)	24 $\mu$ l <b>Red-Dye</b>
12 ml Assay Buffer (1x)	48 $\mu$ l <b>Red-Dye</b>

## 10 Test Protocol

- a. Determine the number of microwell strips required to test the desired number of samples plus appropriate number of wells needed for running blanks and standards. Each sample, standard, blank and optional control sample should be assayed in duplicate. Remove extra microwell strips from holder and store in foil bag with the desiccant provided at 2°-8°C sealed tightly.
- b. Wash the microwell strips twice with approximately 400 µl **Wash Buffer** per well with thorough aspiration of microwell contents between washes. Allow the Wash Buffer to sit in the wells for about **10 – 15 seconds** before aspiration. Take care not to scratch the surface of the microwells.  
After the last wash step, empty wells and tap microwell strips on absorbent pad or paper towel to remove excess Wash Buffer. Use the microwell strips immediately after washing. Alternatively microwell strips can be placed upside down on a wet absorbent paper for not longer than 15 minutes. **Do not allow wells to dry.**
- c. **Standard dilution on the microwell plate** (Alternatively the standard dilution can be prepared in tubes - see 9.5.1.):  
Add 100 µl of Assay Buffer (1x) in duplicate to all **standard wells**. Pipette 100 µl of prepared **standard** (see Preparation of Standard 9.5, concentration = 4000 U/ml) in duplicate into well A1 and A2 (see Table 1). Mix the contents of wells A1 and A2 by repeated aspiration and ejection (concentration of standard 1, S1 = 2000 U/ml), and transfer 100 µl to wells B1 and B2, respectively (see Figure 8). Take care not to scratch the inner surface of the microwells. Continue this procedure 5 times, creating two rows of human sCD8 standard dilutions ranging from 2000 to 31 U/ml. Discard 100 µl of the contents from the last microwells (G1, G2) used.

Figure 8



In case of an **external standard dilution** (see 9.5.1), pipette 100 µl of these standard dilutions (S1 - S7) in the standard wells according to Table 1.

Table 1

Table depicting an example of the arrangement of blanks, standards and samples in the microwell strips:

	<b>1</b>	<b>2</b>	<b>3</b>	<b>4</b>
<b>A</b>	Standard 1 (2000 U/ml)	Standard 1 (2000 U/ml)	Sample 1	Sample 1
<b>B</b>	Standard 2 (1000 U/ml)	Standard 2 (1000 U/ml)	Sample 2	Sample 2
<b>C</b>	Standard 3 (500 U/ml)	Standard 3 (500 U/ml)	Sample 3	Sample 3
<b>D</b>	Standard 4 (250 U/ml)	Standard 4 (250 U/ml)	Sample 4	Sample 4
<b>E</b>	Standard 5 (125 U/ml)	Standard 5 (125 U/ml)	Sample 5	Sample 5
<b>F</b>	Standard 6 (63 U/ml)	Standard 6 (63 U/ml)	Sample 6	Sample 6
<b>G</b>	Standard 7 (31 U/ml)	Standard 7 (31 U/ml)	Sample 7	Sample 7
<b>H</b>	Blank	Blank	Sample 8	Sample 8

- d. Add 100 µl of **Assay Buffer (1x)** in duplicate to the **blank wells**.
- e. Add 50 µl of **Assay Buffer (1x)** to the **sample wells**.
- f. Add 50 µl of each **sample** in duplicate to the **sample wells**.
- g. Cover with an adhesive film and incubate at room temperature (18 to 25°C) for 2 hours, if available on a microplate shaker set at 100 rpm.
- h. Prepare **Detection Antibody** (see Preparation of Detection Antibody 9.3).
- i. Remove adhesive film and empty wells. **Wash** microwell strips 3 times according to point b. of the test protocol. Proceed immediately to the next step.
- j. Add 100 µl of **Detection Antibody** to all wells.
- k. Cover with an adhesive film and incubate at room temperature (18 to 25°C) for 1 hour, if available on a microplate shaker set at 100 rpm.
- l. Prepare **anti-rabbit-IgG-HRP** (refer to Preparation of Anti-Rabbit-IgG-HRP 9.4 ).
- m. Remove adhesive film and empty wells. **Wash** microwell strips 3 times according to point b. of the test protocol. Proceed immediately to the next step.
- n. Add 100 µl of diluted **anti-rabbit-IgG-HRP** to all wells, including the blank wells.
- o. Cover with an adhesive film and incubate at room temperature (18° to 25°C) for 1 hour, if available on a microplate shaker set at 100 rpm.
- p. Remove adhesive film and empty wells. **Wash** microwell strips 3 times according to point b. of the test protocol. Proceed immediately to the next step.
- q. Pipette 100 µl of **TMB Substrate Solution** to all wells.
- r. Incubate the microwell strips at room temperature (18° to 25°C) for about 10 min. Avoid direct exposure to intense light.

**The colour development on the plate should be monitored and**

**the substrate reaction stopped (see next point of this protocol) before positive wells are no longer properly recordable. Determination of the ideal time period for colour development has to be done individually for each assay.**

It is recommended to add the stop solution when the highest standard has developed a dark blue colour. Alternatively the colour development can be monitored by the ELISA reader at 620 nm. The substrate reaction should be stopped as soon as Standard 1 has reached an OD of 0.6 – 0.65.

- s. Stop the enzyme reaction by quickly pipetting 100 µl of **Stop Solution** into each well. It is important that the Stop Solution is spread quickly and uniformly throughout the microwells to completely inactivate the enzyme. Results must be read immediately after the Stop Solution is added or within one hour if the microwell strips are stored at 2 - 8°C in the dark.
- t. Read absorbance of each microwell on a spectro-photometer using 450 nm as the primary wave length (optionally 620 nm as the reference wave length; 610 nm to 650 nm is acceptable). Blank the plate reader according to the manufacturer's instructions by using the blank wells. Determine the absorbance of both the samples and the standards.

**Note: In case of incubation without shaking the obtained O.D. values may be lower than indicated below. Nevertheless the results are still valid.**

## 11 Calculation of Results

- Calculate the average absorbance values for each set of duplicate standards and samples. Duplicates should be within 20 per cent of the mean value.
- Create a standard curve by plotting the mean absorbance for each standard concentration on the ordinate against the human sCD8 concentration on the abscissa. Draw a best fit curve through the points of the graph (a 5-parameter curve fit is recommended).
- To determine the concentration of circulating human sCD8 for each sample, first find the mean absorbance value on the ordinate and extend a horizontal line to the standard curve. At the point of intersection, extend a vertical line to the abscissa and read the corresponding human sCD8 concentration.
- **If instructions in this protocol have been followed samples have been diluted 1:2 (50  $\mu$ l sample + 50  $\mu$ l Assay Buffer (1x)), the concentration read from the standard curve must be multiplied by the dilution factor (x 2).**
- **Calculation of samples with a concentration exceeding standard 1 may result in incorrect human sCD8 levels. Such samples require further external predilution according to expected human sCD8 values with Assay Buffer (1x) in order to precisely quantitate the actual human sCD8 level.**
- It is suggested that each testing facility establishes a control sample of known human sCD8 concentration and runs this additional control with each assay. If the values obtained are not within the expected range of the control, the assay results may be invalid.
- A representative standard curve is shown in Figure 9. This curve cannot be used to derive test results. Each laboratory must prepare a standard curve for each group of microwell strips assayed.

Figure 9

Representative standard curve for human sCD8 ELISA. Human sCD8 was diluted in serial 2-fold steps in Assay Buffer (1x). Do not use this standard curve to derive test results. A standard curve must be run for each group of microwell strips assayed.

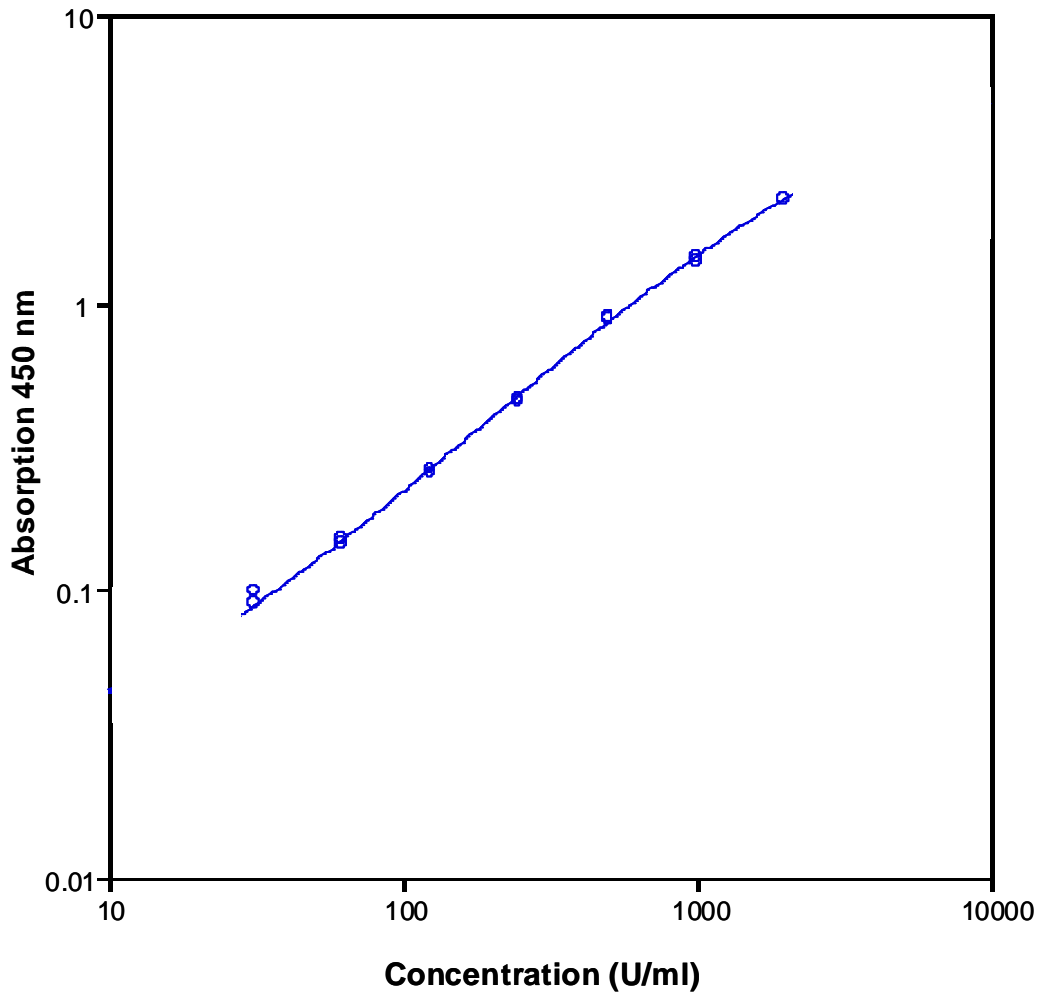


Table 2

Typical data using the human sCD8 ELISA

Measuring wavelength: 450 nm

Reference wavelength: 620 nm

Standard	Human sCD8 Concentration (U/ml)	O.D. at 450 nm	Mean O.D. at 450 nm	C.V. (%)
1	2000	2.497	2.453	1.8%
	2000	2.409		
2	1000	1.401	1.423	1.5%
	1000	1.445		
3	500	0.874	0.8815	0.9%
	500	0.889		
4	250	0.451	0.457	1.3%
	250	0.463		
5	125	0.255	0.2595	1.7%
	125	0.264		
6	63	0.149	0.147	1.4%
	63	0.145		
7	31	0.09	0.0945	4.8%
	31	0.099		
Blank	0	0.032	0.033	
	0	0.034		

The OD values of the standard curve may vary according to the conditions of assay performance (e.g. operator, pipetting technique, washing technique or temperature effects). Furthermore shelf life of the kit may affect enzymatic activity and thus colour intensity. Values measured are still valid.

## 12 Limitations

- Since exact conditions may vary from assay to assay, a standard curve must be established for every run.
- Bacterial or fungal contamination of either screen samples or reagents or cross-contamination between reagents may cause erroneous results.
- Disposable pipette tips, flasks or glassware are preferred, reusable glassware must be washed and thoroughly rinsed of all detergents before use.
- Improper or insufficient washing at any stage of the procedure will result in either false positive or false negative results. Empty wells completely before dispensing fresh wash solution, fill with Wash Buffer as indicated for each wash cycle and do not allow wells to sit uncovered or dry for extended periods.
- The use of radioimmunotherapy has significantly increased the number of patients with human anti-mouse IgG antibodies (HAMA). HAMA may interfere with assays utilizing murine monoclonal antibodies leading to both false positive and false negative results. Serum samples containing antibodies to murine immunoglobulins can still be analysed in such assays when murine immunoglobulins (serum, ascitic fluid, or monoclonal antibodies of irrelevant specificity) are added to the sample.

## **13 Performance Characteristics**

### **13.1 Sensitivity**

The limit of detection of human sCD8 defined as the analyte concentration resulting in an absorbance significantly higher than that of the dilution medium (mean plus 2 standard deviations) was determined to be 7 U/ml (mean of 6 independent assays).

### **13.2 Reproducibility**

#### **13.2.1 Intra-assay**

Reproducibility within the assay was evaluated in 3 independent experiments. Each assay was carried out with 6 replicates of 4 serum samples containing different concentrations of human sCD8. 2 standard curves were run on each plate. Data below show the mean human sCD8 concentration and the coefficient of variation for each sample (see Table 3). The calculated overall intra-assay coefficient of variation was 7.2%.

Table 3

The mean human sCD8 concentration and the coefficient of variation for each sample

Sample	Experiment	Mean Human sCD8 Concentration (U/ml)	Coefficient of Variation (%)
1	1	9.89	5
	2	11.00	8
	3	11.09	8
2	1	8.58	7
	2	9.66	12
	3	8.69	8
3	1	11.18	5
	2	12.08	4
	3	12.20	5
4	1	19.69	6
	2	21.98	7
	3	20.87	12

### 13.2.2 Inter-assay

Assay to assay reproducibility within one laboratory was evaluated in 3 independent experiments. Each assay was carried out with 6 replicates of 4 serum samples containing different concentrations of human sCD8. 2 standard curves were run on each plate. Data below show the mean human sCD8 concentration and the coefficient of variation calculated on 18 determinations of each sample (see Table 4). The calculated overall inter-assay coefficient of variation was 4.7%.

Table 4

The mean human sCD8 concentration and the coefficient of variation of each sample

Sample	Mean Human sCD8 Concentration (U/ml)	Coefficient of Variation (%)
1	10.66	5.1
2	8.97	5.4
3	11.82	3.8
4	20.85	4.5

### 13.3 Spike Recovery

The spike recovery was evaluated by spiking 4 levels of human sCD8 into different pooled normal human serum samples. Recoveries were determined in 2 independent experiments with 4 replicates each. The amount of endogenous human sCD8 in unspiked serum was subtracted from the spike values. The overall mean recovery was 81%.

### 13.4 Dilution Parallelism

3 serum samples with different levels of human sCD8 were analysed at serial 2 fold dilutions with 4 replicates each. The recovery ranged from 83% to 104% with an overall recovery of 93% (see Table 5).

Table 5

Sample	Dilution	Expected Human sCD8 Concentration (U/ml)	Observed Human sCD8 Concentration (U/ml)	Recovery of Expected Human sCD8 Concentration (%)
1	1:2	--	103.9	--
	1:4	51.9	43.2	83
	1:8	21.6	18.7	87
2	1:2	--	71.9	--
	1:4	36.0	37.6	104
	1:8	18.8	18.6	99
3	1:2	--	48.5	--
	1:4	24.2	23.8	98
	1:8	11.9	10.4	88

### 13.5 Sample Stability

#### 13.5.1 Freeze-Thaw Stability

Aliquots of serum samples (spiked or unspiked) were stored at -20°C and thawed 3 times, and the human sCD8 levels determined. There was no significant loss of human sCD8 immunoreactivity detected by freezing and thawing.

#### 13.5.2 Storage Stability

Aliquots of serum samples (spiked or unspiked) were stored at -20°C, 2-8°C, room temperature (RT) and at 37°C, and the human sCD8 level determined after 24 h. There was no significant loss of human sCD8 immunoreactivity detected during storage under above conditions.

### **13.6 Specificity**

The interference of circulating factors of the immune system was evaluated by spiking these proteins at physiologically relevant concentrations into a human sCD8 positive serum.

There was no crossreactivity detected.

### **13.7 Expected Values**

A panel of 16 serum samples from randomly selected apparently healthy donors (males and females) was tested for human sCD8.

The detected human sCD8 levels ranged between 144 and 767 U/ml with a mean level of 413 U/ml.

The levels measured may vary with the sample collection used.

## 14 Bibliography

- 1) Williams, A.F., and A.N. Barclay. 1988. The immunoglobulin superfamily – domains for cell surface recognition. *Annu. Rev. Immunol.* 6:381-405
- 2) Littman. 1987. The structure of the CD4 and CD8 genes. *Annu. Rev. Immunol.* 5:561-584.
- 3) Reinherz, E.L., and S.F. Schlossmann. 1980. Regulation of the immune response – inducer and suppressor T-lymphocyte subsets in human beings. *N. Engl. J. Med.* 303:370-373
- 4) Zamoyska, R. 1994. The CD8 coreceptor revisited: one chain good, two chains better. *Immunity* 1,243-246
- 5) Norment AM, Salter RD, Parham P, Engelhard VH, Littman DR. 1988. Cell-cell adhesion mediated by CD8 and MHC class I molecules. *Nature* Nov 3;336(6194):79-81
- 6) Fujimoto J, Stewart SJ, Levy R. 1984. Immunochemical analysis of the released Leu-2 (T8) molecule. *J Exp Med.* Jul 1;160(1):116-24.
- 7) Fujimoto J, Levy S, Levy R. 1983 Spontaneous release of the Leu-2 (T8) molecule from human T cells. *Exp Med.* Sep 1;158(3):752-66.
- 8) Lal RB, Rudolph DL, Roberts C, Honda M. 1991. Elevated levels of soluble CD8 and soluble CD25 in patients with human T cell leukemia virus type I-associated myelopathy and adult T cell leukemia. *J Infect Dis.* Aug;164(2):429-30.
- 9) Ho AD, Maruyama M, Maghazachi A, Mason JR, Gluck S, Corringham RE. 1994. Soluble CD4, soluble CD8, soluble CD25, lymphopoietic recovery, and endogenous cytokines after high-dose chemotherapy and blood stem cell transplantation. *Blood.* Nov 15;84(10):3550-7.
- 10) Wijngaard PL, Van der Meulen A, Gmelig Meyling FH, De Jonge N, Schuurman HJ. 1994. Soluble CD8 and CD25 in serum of patients after heart transplantation. *Clin Exp Immunol.* Sep; 97(3):505-9.

- 11) Lenkei R, Bratt G, Holmberg V, Muirhead K, Sandstrom E. 1998 Indicators of T-cell activation: correlation between quantitative CD38 expression and soluble CD8 levels in asymptomatic HIV+ individuals and healthy controls. *Cytometry*. Oct 1;33(2):115-22.
- 12) Schlesinger M, Chu FN, Badamchian M, Jiang JD, Roboz JP, Goldstein AL, Bekesi JG. 1994. A distinctive form of soluble CD8 is secreted by stimulated CD8+ cells in HIV-1-infected and high-risk individuals. *Clin Immunol Immunopathol*. Nov;73(2):252-60.
- 13) Pizzolo G, Vinante F, Morosato L, de Sabata D, Sinicco A, Raiteri R, Agostini C, Semenzato G. 1992. Prognostic significance of soluble CD8 serum levels in HIV-1 infection. *AIDS*. Jan;6(1):133-4.
- 14) Nishanian P, Hofmann B, Wang Y, Jackson AL, Detels R, Fahey JL. 1991. Serum soluble CD8 molecule is a marker of CD8 T-cell activation in HIV-1 disease. *AIDS*. Jul;5(7):805-12.
- 15) Watanabe M, Amino N, Hochito K, Watanabe K, Kuma K, Iwatani Y. 1997. Opposite changes in serum soluble CD8 in patients at the active stages of Graves' and Hashimoto's diseases. *Thyroid*. Oct;7(5):743-7.
- 16) Franciotta D, Piccolo G, Zardini E, Bergamaschi R, Cosi V. Soluble CD8 and ICAM-1 in serum and CSF of MS patients treated with 6-methylprednisolone. *Acta Neurol Scand*. 1997 May;95(5):275-9.
- 17) Maes M, Vandoolaeghe E, Ranjan R, Bosmans E, Van Gastel A, Bergmans R, Desnyder R. 1996. Increased serum soluble CD8 or suppressor/cytotoxic antigen concentrations in depression: suppressive effects of glucocorticoids. *Biol Psychiatry*. Dec 15;40(12):1273-81
- 18) Di Bonito P, De Bellis A, Capaldo B, Turco S, Corigliano G, Pace E, Bizzarro A. Soluble CD8 antigen, stimulated C-peptide and islet cell antibodies are predictors of insulin requirement in newly diagnosed patients with unclassifiable diabetes. *Acta Diabetol*. 1996 Sep;33(3):220-4.
- 19) Yoneyama A, Nakahara K, Higashihara M, Kurokawa K. Increased levels of soluble CD8 and CD4 in patients with infectious mononucleosis. *Br J Haematol*. 1995 Jan;89(1):47-54.

For literature update refer to **[www.ibl-america.com](http://www.ibl-america.com)**

## 15 Ordering Information

For orders please contact:

### **USA**

IBL-America, Inc.

8201 Central Ave NE. Suite P

Minneapolis, MN 55432, USA

toll-free phone: +1 (888) 523 1246

phone: +1 (763) 780 2955

fax: +1 (763) 780 2988

For technical information please contact:

e-mail: [ibl@ibl-america.com](mailto:ibl@ibl-america.com)

[www.IBL-America.com](http://www.IBL-America.com)

**Cat.No. IB49626 human sCD8 ELISA**

**Cat.No. IB49626-10 human sCD8 ELISA**

## 16 Reagent Preparation Summary

### 16.1 Wash Buffer (1x)

Add **Wash Buffer Concentrate** 20x (50 ml) to 950 ml distilled water.

Number of Strips	Wash Buffer Concentrate (ml)	Distilled Water (ml)
1 - 6	25	475
1 - 12	50	950

### 16.2 Assay Buffer (1x)

Add **Assay Buffer Concentrate** 20x (5 ml) to 95 ml distilled water.

Number of Strips	Assay Buffer Concentrate (ml)	Distilled Water (ml)
1 - 6	2.5	47.5
1 - 12	5.0	95.0

### 16.3 Detection Antibody

Make a 1:100 dilution of **Detection Antibody** in Assay Buffer (1x):

Number of Strips	Detection Antibody (ml)	Assay Buffer (1x) (ml)
1 - 6	0.06	5.94
1 - 12	0.12	11.88

### 16.4 Anti-Rabbit-IgG-HRP

Predilute **anti-rabbit-IgG-HRP** 1:10 by adding 135  $\mu$ l Assay Buffer (1x) to the tube containing the anti-rabbit-IgG-HRP concentrate.

Make a further 1:100 dilution in Assay Buffer (1x).

Number of Strips	Prediluted (1:10) anti-rabbit-IgG-HRP (ml)	Assay Buffer (1x) (ml)
1 - 6	0.06	5.94
1 - 12	0.12	11.88

### 16.5 Human sCD8 Standard

Prepare **human sCD8 standard** by addition of Assay Buffer (1x) as stated on the label and swirl or mix gently.

## 17 Test Protocol Summary

1. Determine the number of microwell strips required.
2. Wash microwell strips twice with Wash Buffer.
3. Standard dilution on the microwell plate: Add 100 µl Assay Buffer (1x), in duplicate, to all standard wells. Pipette 100 µl prepared standard into the first wells and create standard dilutions by transferring 100 µl from well to well. Discard 100 µl from the last wells.  
Alternatively external standard dilution in tubes (see 9.5.1): Pipette 100 µl of these standard dilutions in the microwell strips.
4. Add 100 µl Assay Buffer (1x), in duplicate, to the blank wells.
5. Add 50 µl Assay Buffer (1x) to sample wells.
6. Add 50 µl sample in duplicate, to designated sample wells.
7. Cover microwell strips and incubate 2 hours at room temperature (18° to 25°C).
8. Prepare Detection Antibody.
9. Empty and wash microwell strips 3 times with Wash Buffer.
10. Add 100 µl Detection Antibody to all wells.
11. Cover microwell strips and incubate 1 hour at room temperature (18° to 25°C).
12. Prepare anti-rabbit-IgG-HRP.
13. Empty and wash microwell strips 3 times with Wash Buffer.
14. Add 100 µl diluted anti-rabbit-IgG-HRP to all wells.
15. Cover microwell strips and incubate 1 hour at room temperature (18° to 25°C).
16. Empty and wash microwell strips 3 times with Wash Buffer.
17. Add 100 µl of TMB Substrate Solution to all wells.
18. Incubate the microwell strips for about 10 minutes at room temperature (18° to 25°C).
19. Add 100 µl Stop Solution to all wells.
20. Blank microwell reader and measure colour intensity at 450 nm.

**Note: If instructions in this protocol have been followed samples have been diluted 1:2 (50 µl sample + 50 µl Assay Buffer (1x)), the concentration read from the standard curve must be multiplied by the dilution factor (x 2).**